



V. ORLANDI

S I S T E M I D I T R A I N O

programma di produzione **sistemi di traino agricoli**

production programme **agricultural towing systems**

Edizione **01**
Edition

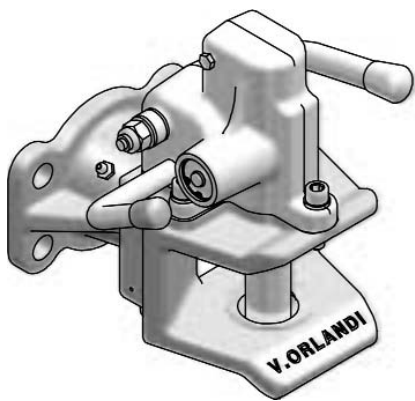
since 1859

Note/Note

Indice Generale

General Index

tipo/type	GANCI DI TRAINO / TRAILER COUPLINGS	pag./page
AH 31	gancio CEE automatico flangiato - perno cilindrico - leggero <i>automatic CEE trailer coupling with light flange bearing cylindrical coupling pin</i>	4
AH 31H	gancio CEE automatico flangiato - perno cilindrico - pesante <i>automatic CEE trailer coupling with light flange bearing cylindrical coupling pin</i>	6
AH 31S	gancio CEE automatico fusione - perno cilindrico <i>automatic CEE trailer coupling with xasted lift bearing cylindrical coupling pin</i>	8
AH 38	gancio CEE automatico flangiato - perno botte - leggero <i>automatic CEE trailer coupling with light flange bearing barrel coupling pin</i>	10
AH 38H	gancio CEE automatico flangiato - perno botte - pesante <i>automatic CEE trailer coupling with flange bearing barrel coupling pin</i>	12
AH 38S	gancio CEE automatico fusione - perno botte <i>automatic CEE trailer coupling with casted lift bearing barrel coupling pin</i>	14
MH 31	gancio CEE manuale flangiato - leggero <i>non-automatic CEE trailer coupling with light flange bearing</i>	16
MH 31H	gancio CEE manuale flangiato - pesante <i>non-automatic CEE heavy trailer coupling with flange bearing</i>	18
MH 31S	gancio CEE manuale fusione - pesante <i>non-automatic CEE trailer coupling with casted lift bearing</i>	20
MH C	campana CUNA cat. C <i>non-automatic CUNA cat. C Trailer Coupling</i>	22
MH D	campana CUNA cat. D <i>non-automatic CUNA "D" Trailer Coupling</i>	24
MH D2	campana CUNA cat.D2 <i>non-automatic CUNA cat. D2</i>	26
MH D2M	sistema matrioska cat. D3 <i>non-automatic "Matrioska" Trailer Couplin</i>	28
MH D3	campana CUNA cat. D3 <i>non-automatic CUNA D3 Trailer Coupling</i>	30
MH D3M	sistema matrioska cat. D3/C <i>non-automatic CUNA D3/C Matrioska System</i>	32
LB 40	slitta flangiata <i>flanged Lift bearing</i>	34
SP 38	piton fix removibile <i>removable piton fix</i>	36
TELAJ PER TRATTORI / TOWING BRACKETS		pag./page
JOHN DEERE		39
KUBOTA		42
LANDINI		44
Mc CORMICK		47
SAME DEUTZ		50
PARAMETRI TECNICI / TECHNICAL PARAMETERS		pag./page
METODOLOGIA DI CALCOLO / CALCULATION METHOD		55

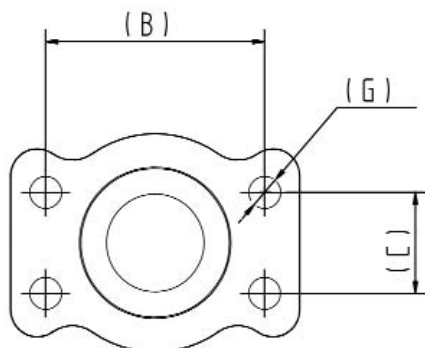
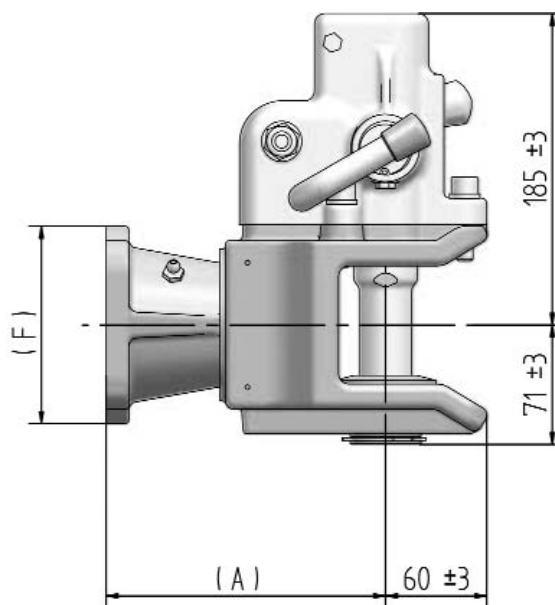
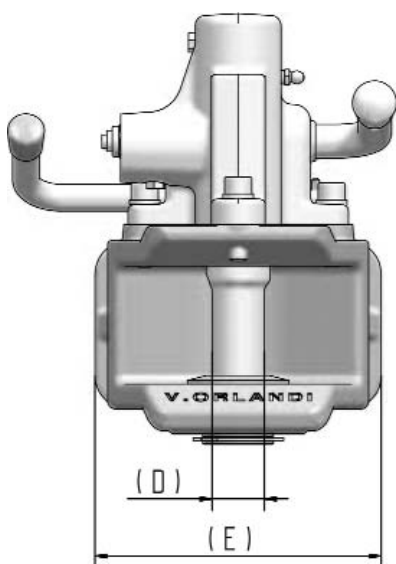


AH 31

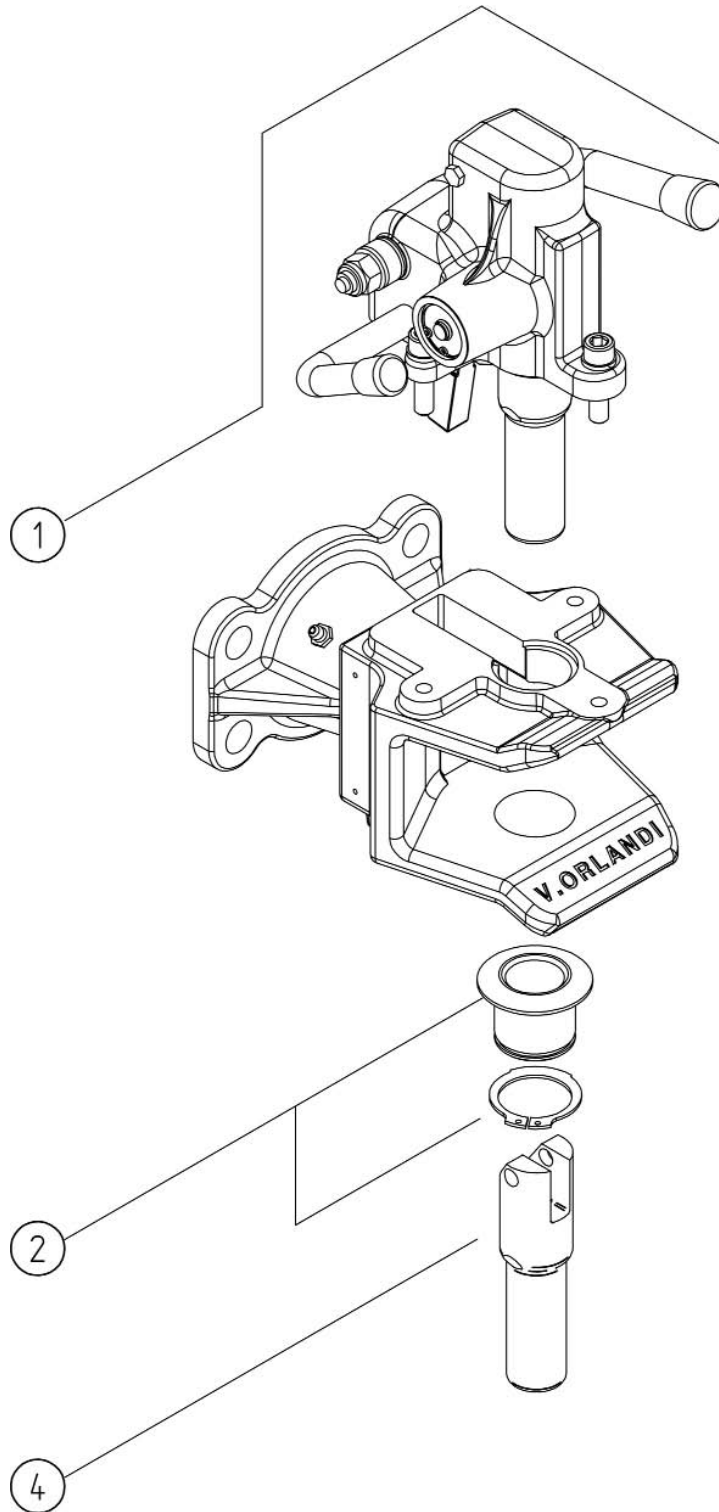
Gancio CEE automatico flangiato leggero
perno cilindrico
Automatic CEE trailer coupling
with light flange bearing
cylindrical coupling pin

Per occhioli For drawbar eyes	∅ 40	Riferimento - Reference: DIN 11026-11043-74054
----------------------------------	-------------	---

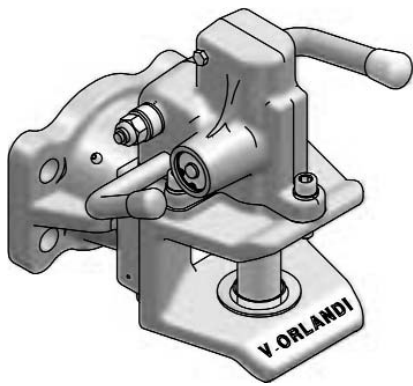
Dati tecnici - Technical data					
Tipo Type	Codice Article number	Flangia Hole pattern	Omologazione/Homologation 89/173/CE		
			Valore D D-Value (Kn)	Valore S S-Value (Kg)	N°
AH31-1	AH 310 B1	130 x 60	60	2000	e11*2138
AH31-3	AH 310 B3	120 x 55	60	2000	e11*2138



Tipo Type	A (mm)	B (mm)	C (mm)	D (mm)	E (mm)	F (mm)	G (mm)
AH 31-1	167,5	130	60	30,6	172	130	19
AH 31-3	167,5	120	55	30,6	172	130	17



POS.	Tutti i tipi All types	Tipo - Type	
		AH 310 B1	AH 310 B3
1	RA00034		
2	RA00028		
4	RA00035		



AH 31H

Gancio CEE automatico flangiato
perno cilindrico
Automatic CEE trailer coupling
with light flange bearing
cylindrical coupling pin

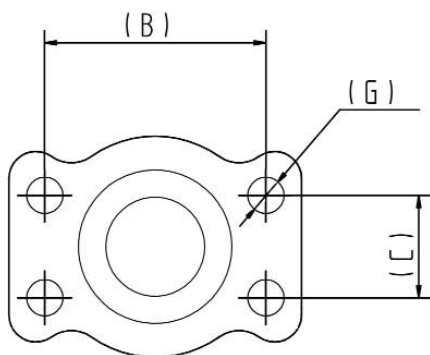
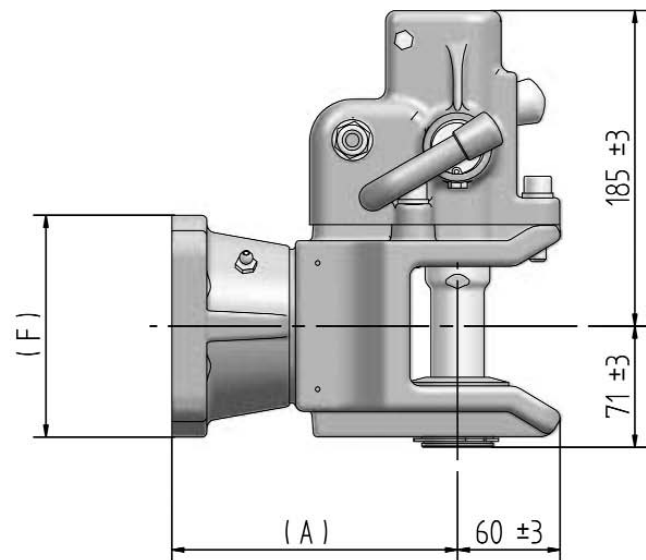
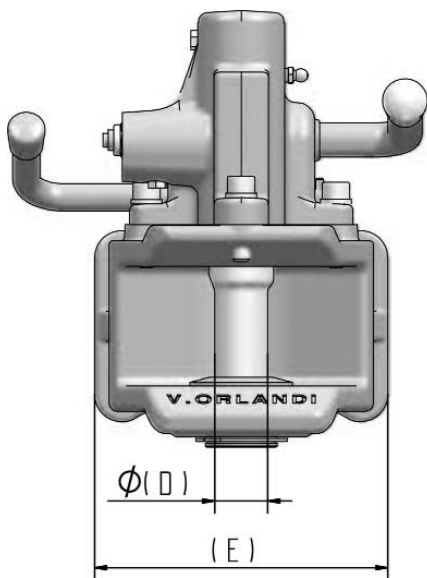
Per occhielli
For drawbar eyes

Ø
40

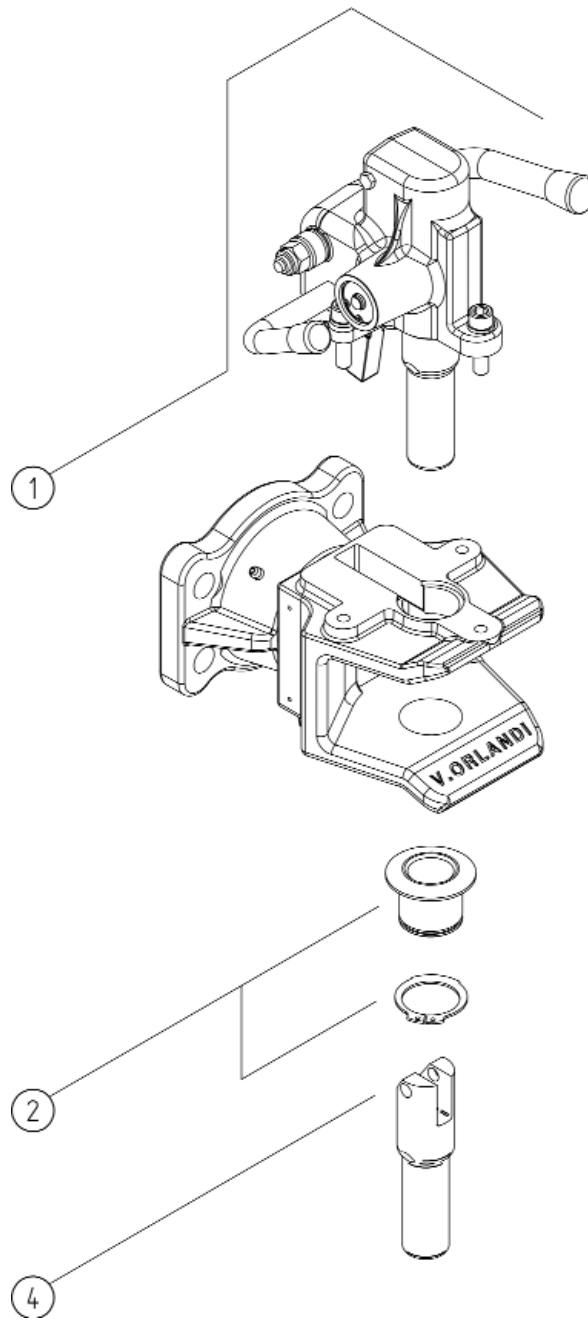
Riferimento - Reference:
DIN 11026-11043-74054

Dati tecnici - Technical data

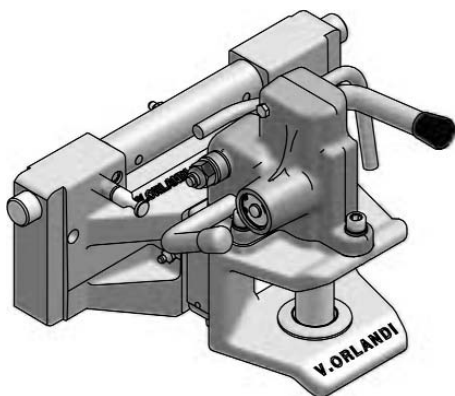
Tipo Type	Codice Article number	Flangia Hole pattern	Omologazione/Homologation 89/173/CE		
			Valore D D-Value (Kn)	Valore S S-Value (Kg)	N°
AH31H-1	AH 31H B1	130 x 60	100	2500	e3*3009
AH31H-4	AH 31H B4	140 x 80	100	2500	e3*3009



Tipo-Type	A (mm)	B (mm)	C (mm)	D (mm)	E (mm)	F (mm)	G (mm)
AH 31H-1	167,5	130	60	30,6	172	130	19
AH 31H-4	167,5	140	80	30,6	172	130	17



POS.	Tutti i tipi All types	Tipo - Type	
		AH 31H B1	AH 31H B4
1	RA00034		
2	RA00028		
4	RA00035		



AH 31S

Gancio CEE automatico in fusione
perno cilindrico
Automatic CEE trailer coupling
with casted lift bearing
cylindrical coupling pin

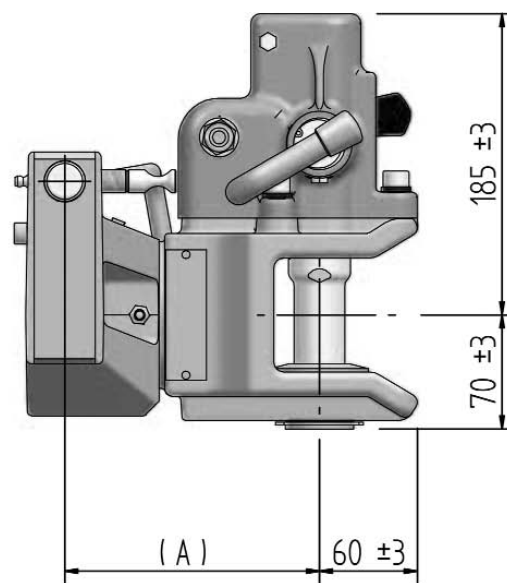
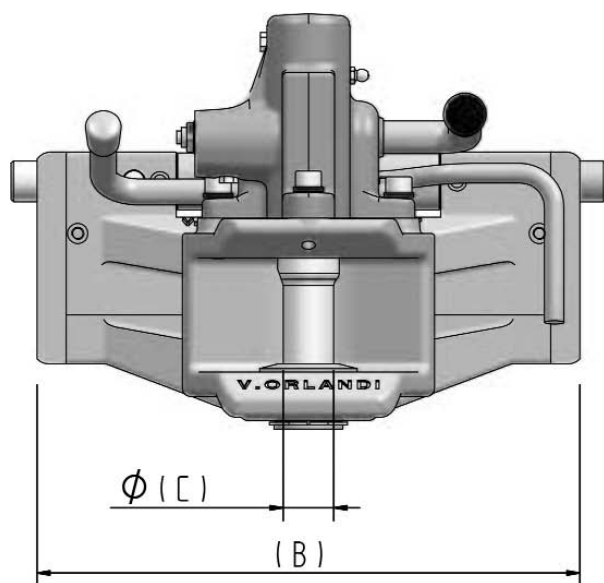
Per occhioni
For drawbar eyes

\varnothing
40

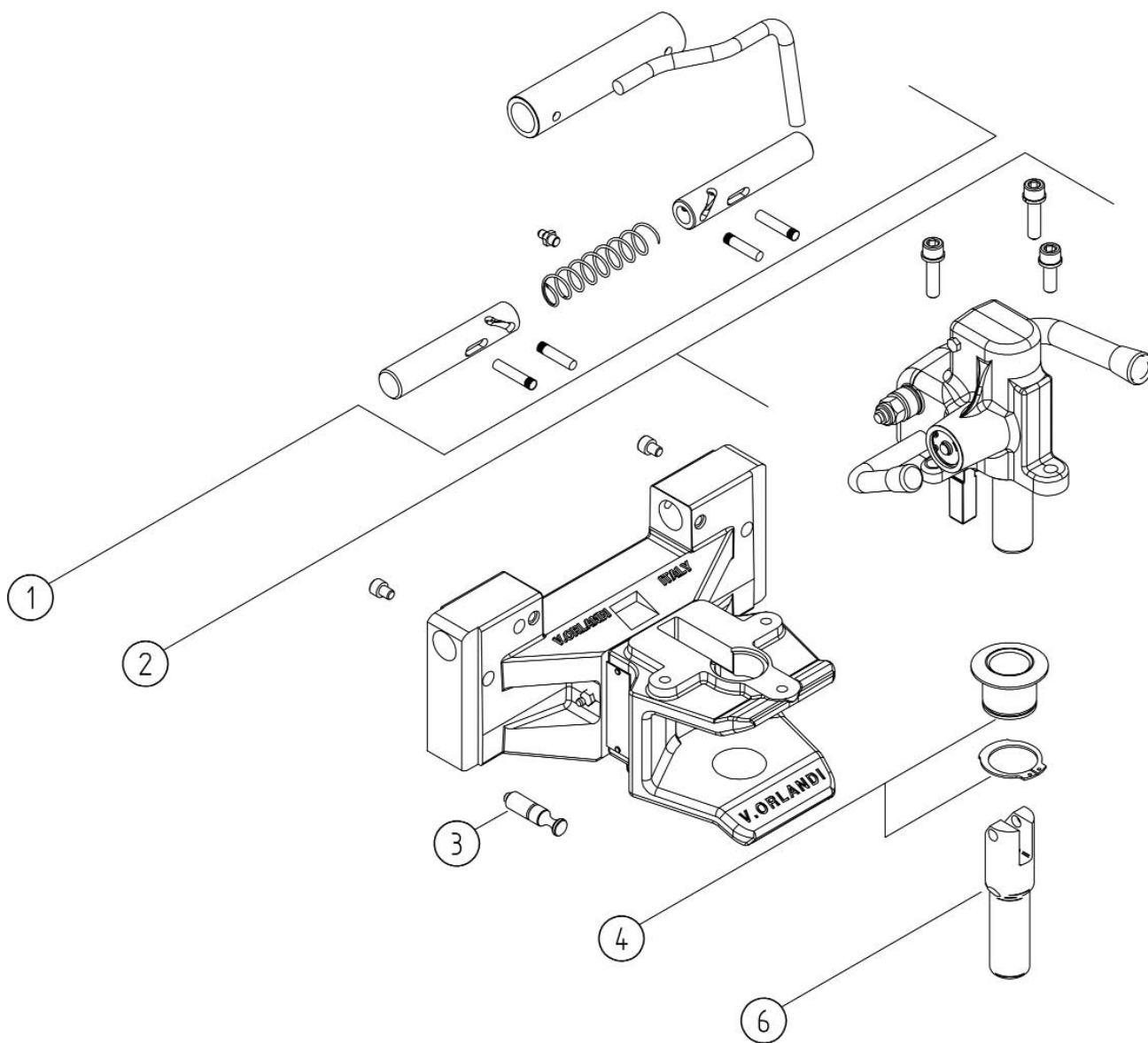
Riferimento - Reference:
DIN 11026-11043-74054

Dati tecnici - Technical data

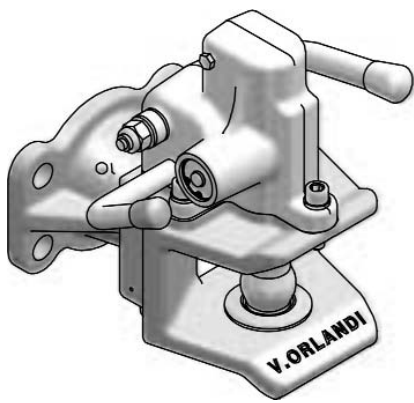
Tipo Type	Codice Article number	Omologazione/Homologation 89/173/CE		
		Valore D D-Value (Kn)	Valore S S-Value (Kg)	N°
AH31S-1	AH 311 B8	84,3	2500	e11*2067
AH31S-2	AH 312 B8	84,3	2500	e11*2067



Tipo - Type	A (mm)	B (mm)	C (mm)
AH 31S-1	156	333,5	30,6
AH 31S-2	156	320	30,6



POS.	Tutti i tipi All types	Tipo - Type	
		AH 311 B8	AH 312 B8
1		RA00036	RA00037
2	RA00034		
3	RA00002		
4	RA00028		
6	RA00035		

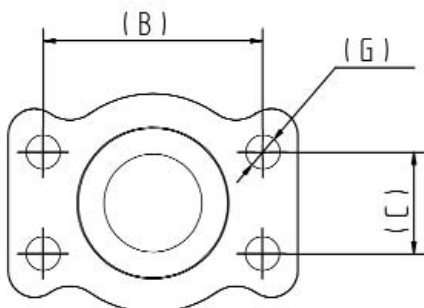
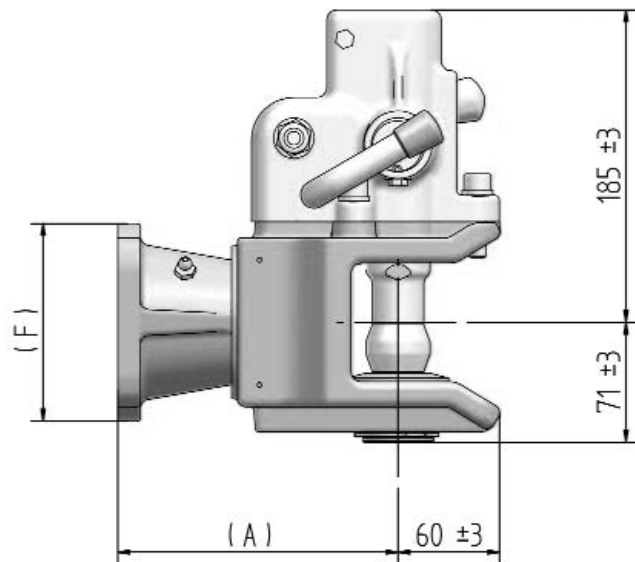
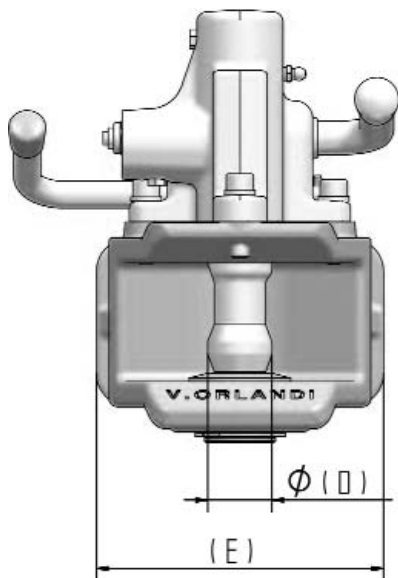


AH 38

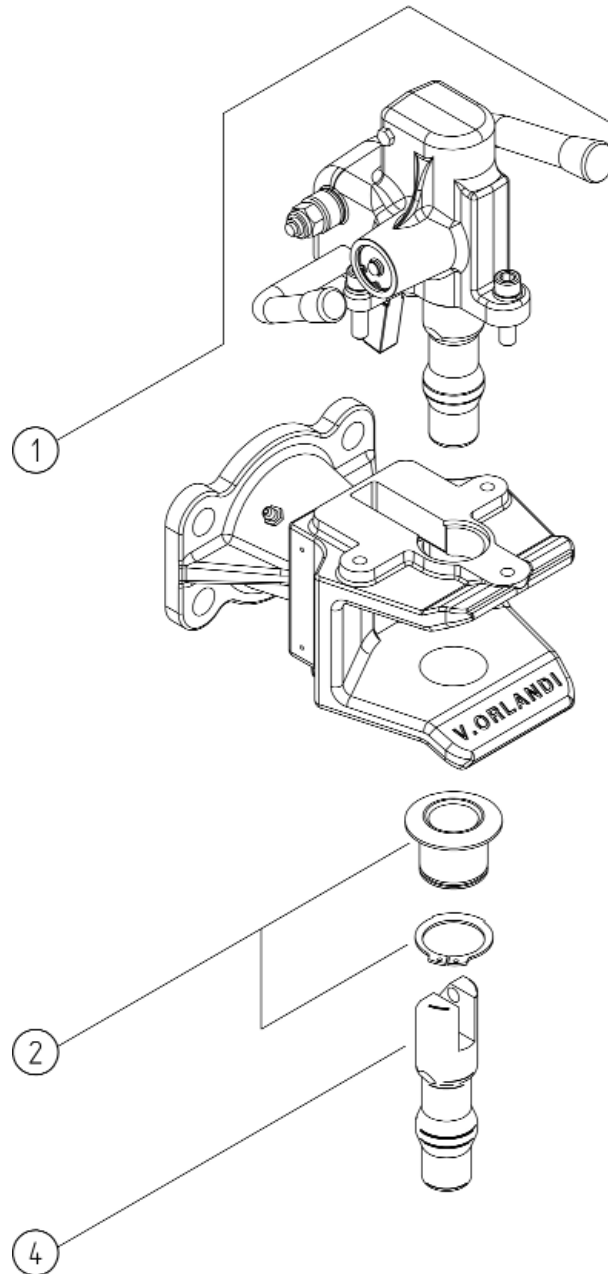
Gancio CEE automatico flangiato leggero
perno a botte
Automatic CEE trailer coupling
with light flange bearing
barrel coupling pin

Per occhioli For drawbar eyes	∅ 40	Riferimento - Reference: DIN 11026-11043-74054
----------------------------------	-----------------------	---

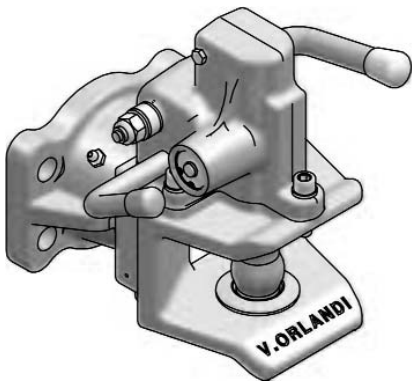
Dati tecnici - Technical data					
Tipo Type	Codice Article number	Flangia Hole pattern	Omologazione/Homologation 89/173/CE		
			Valore D D-Value (Kn)	Valore S S-Value (Kg)	N°
AH38-1	AH 380 A1	130 x 60	60	2000	e11*2138
AH38-3	AH 380 A3	120 x 55	60	2000	e11*2138



Tipo-Type	A (mm)	B (mm)	C (mm)	D (mm)	E (mm)	F (mm)	G (mm)
AH 38-1	167,5	130	60	38	172	130	19
AH 38-3	167,5	120	55	38	172	130	17



POS.	Tutti i tipi All types	Tipo - Type	
		AH 380 A1	AH 380 A3
1	RA00007		
2	RA00028		
4	RA00029		



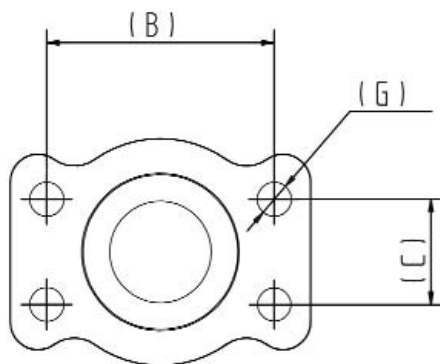
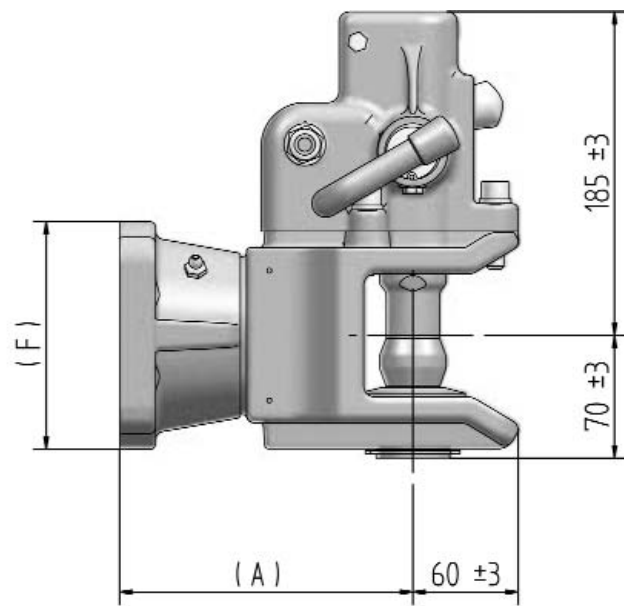
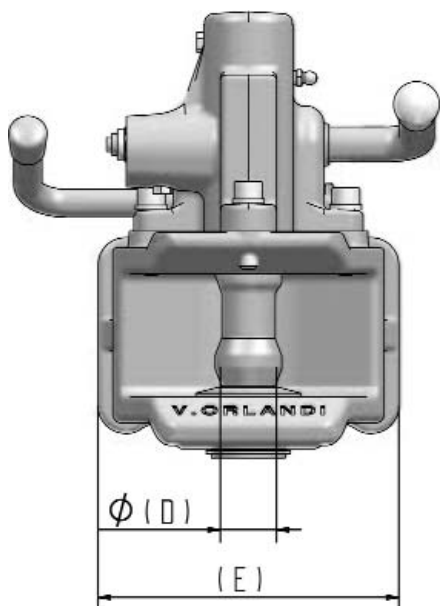
AH 38H

Gancio CEE automatico flangiato
perno a botte
Automatic CEE trailer coupling
with flange bearing
barrel coupling pin

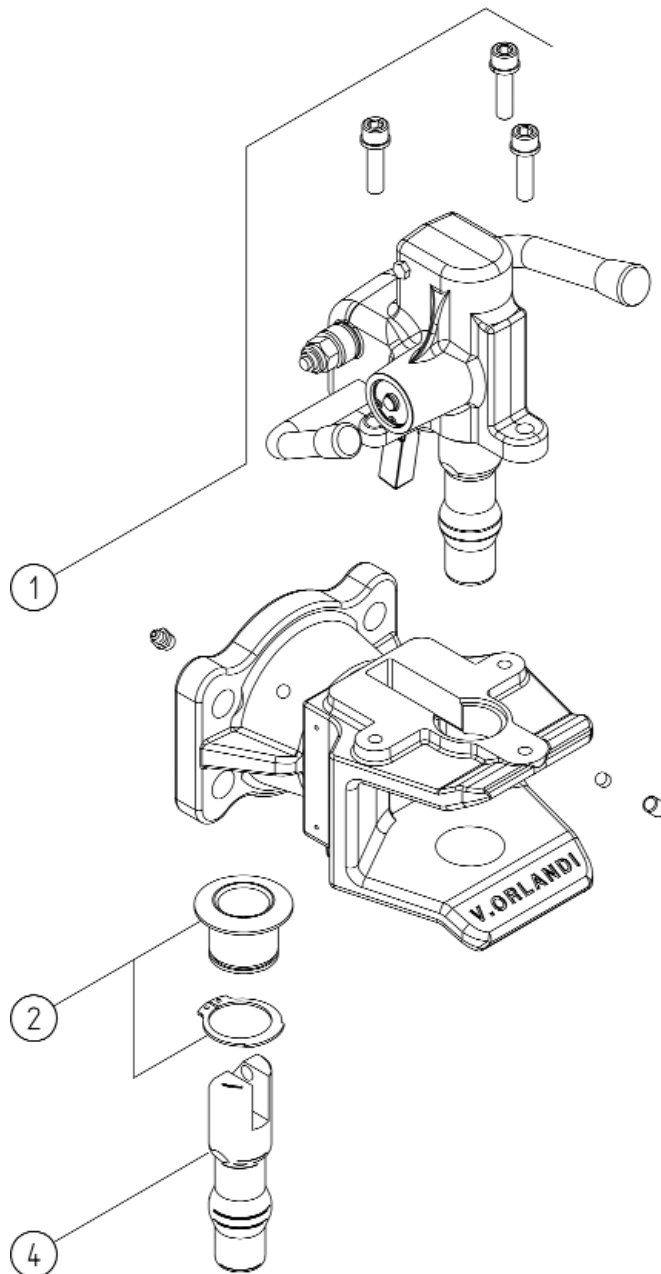
Per occhioni For drawbar eyes	∅ 40	Riferimento - Reference: DIN 11026-11043-74054
----------------------------------	-------------	---

Dati tecnici - Technical data

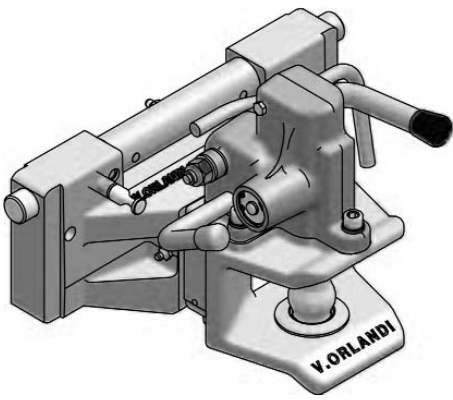
Tipo Type	Codice Article number	Flangia Hole pattern	Omologazione/Homologation 89/173/CE		
			Valore D D-Value (Kn)	Valore S S-Value (Kg)	N°
AH38H-1	AH 38H A1	130 x 60	100	2500	e3*3009
AH38H-4	AH 38H A4	140 x 80	100	2500	e3*3009



Tipo-Type	A (mm)	B (mm)	C (mm)	D (mm)	E (mm)	F (mm)	G (mm)
AH 38H-1	167,5	130	60	38	172	130	19
AH 38H-4	167,5	140	80	38	172	130	17



POS.	Tutti i tipi All types	Tipo - Type	
		AH 38H A1	AH 38H A4
1	RA00007		
2	RA00028		
4	RA00029		



AH 38S

Gancio CEE automatico su slitta
in fusione perno a botte
Automatic CEE trailer coupling with lift bearing
barrel coupling pin

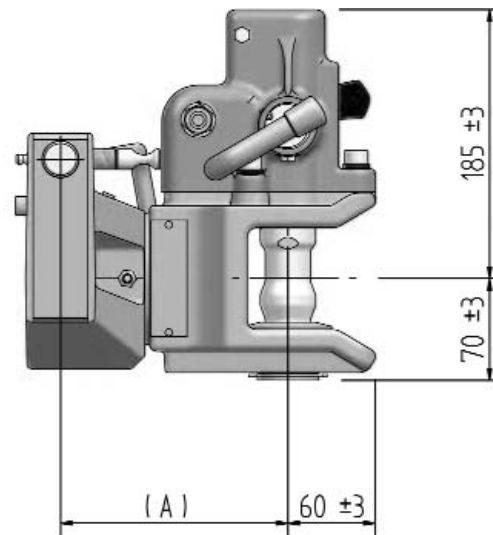
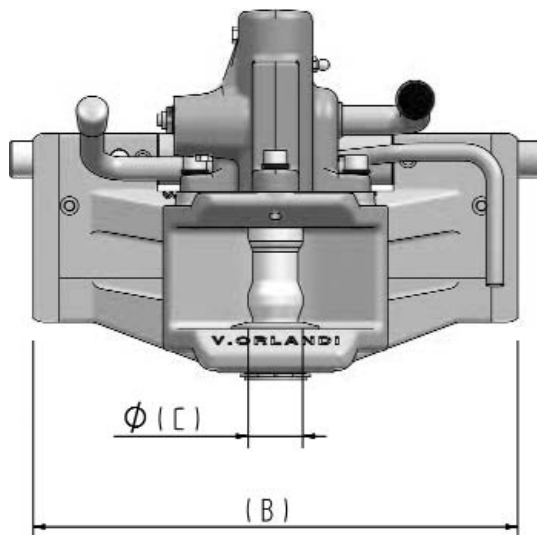
Per occhioni
For drawbar eyes

Ø
40

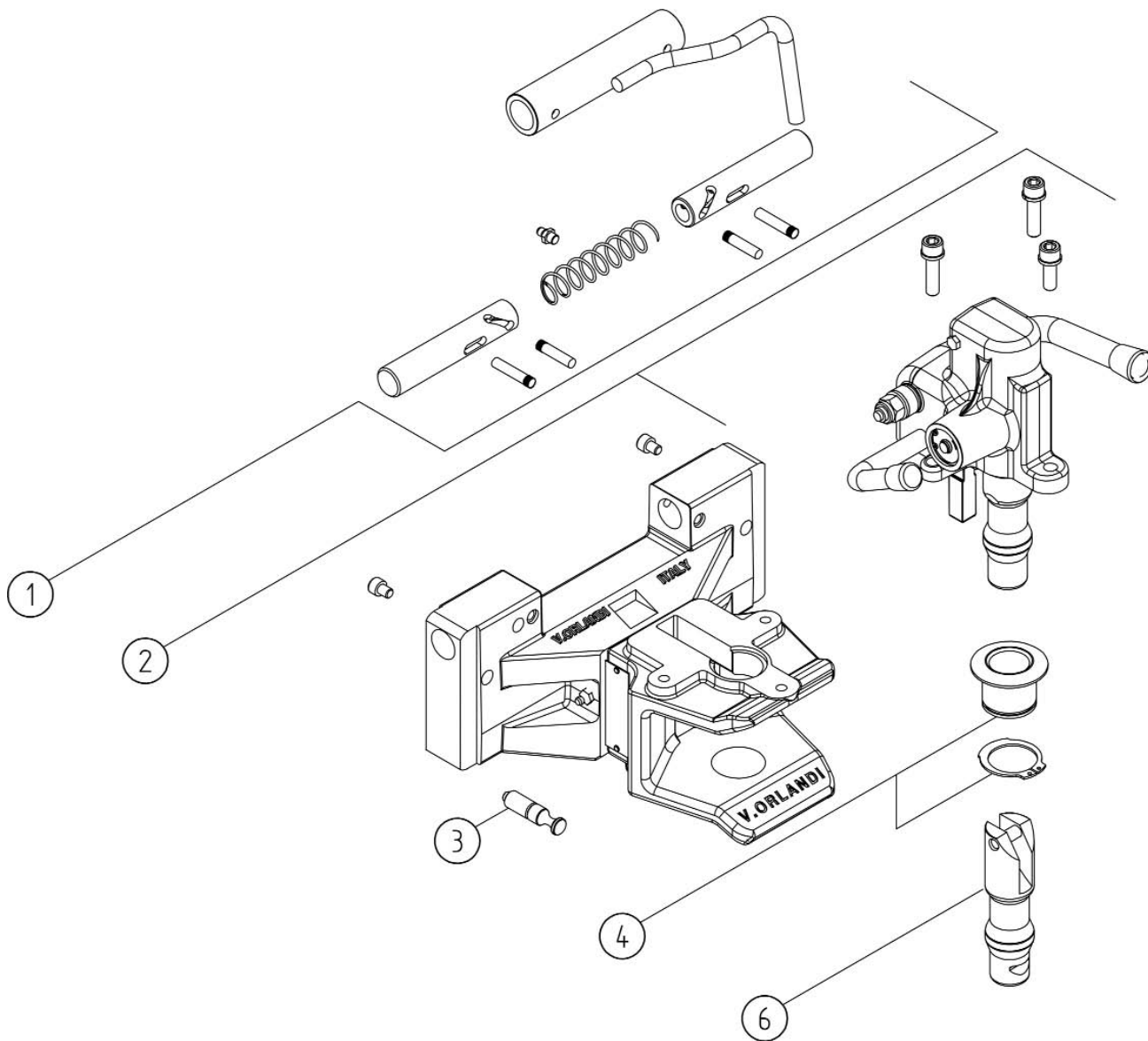
Riferimento - Reference:
DIN 11026-11043-74054

Dati tecnici - Technical data

Tipo Type	Codice Article number	Omologazione/Homologation 89/173/CE		
		Valore D D-Value (Kn)	Valore S S-Value (Kg)	N°
AH38S-1	AH 381 A8	84,3	2500	e11*2067
AH38S-2	AH 382 A8	84,3	2500	e11*2067



Tipo - Type	A (mm)	B (mm)	C (mm)
AH 38S-1	156	333,5	38
AH 38S-2	156	320	38



POS.	Tutti i tipi All types	Tipo - Type	
		AH 381 A8	AH 382 A8
1		RA00036	RA00037
2	RA00007		
3	RA00002		
4	RA00028		
6	RA00029		

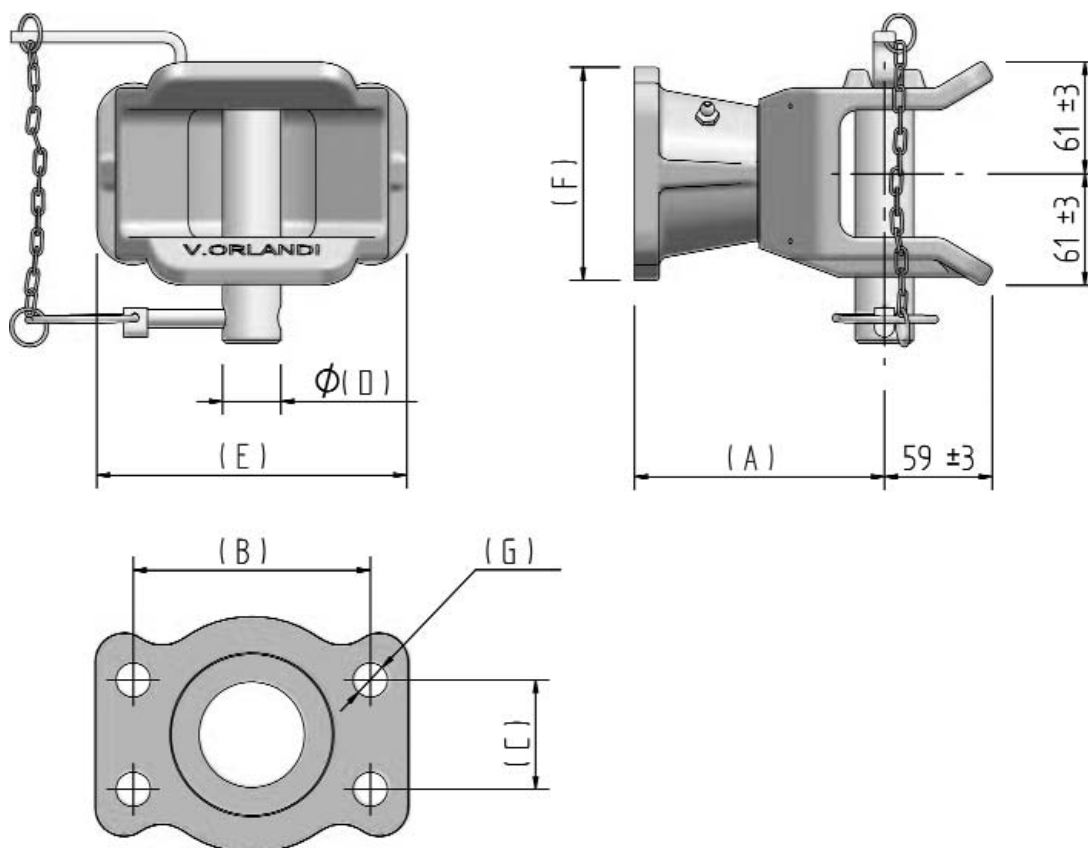


MH 31

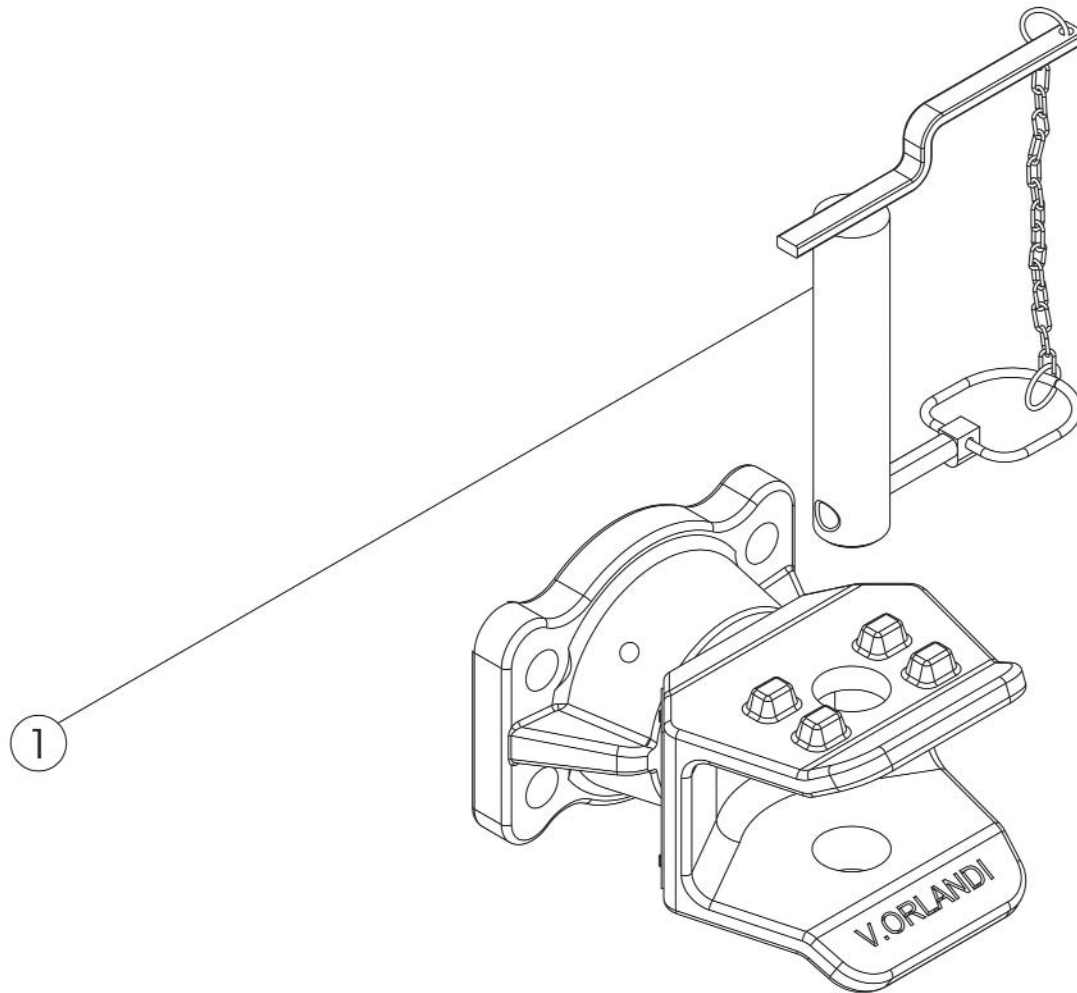
Gancio CEE manuale flangiato leggero
Non-automatic CEE trailer coupling with
light flange bearing

Per occhioni For drawbar eyes	40/50	Riferimento - Reference: DIN 11026-11043-74054
----------------------------------	--------------	---

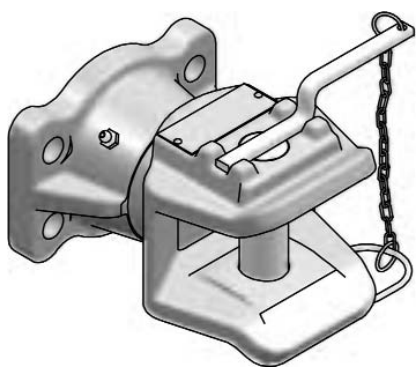
Dati tecnici - Technical data					
Tipo Type	Codice Article number	Flangia Hole pattern	Omologazione/Homologation 89/173/CE		
			Valore D D-Value (Kn)	Valore S S-Value (Kg)	N°
MH 31-1	MH 310 F1	130 x 60	60	2000	e11*2101
MH 31-3	MH 310 F3	120 x 55	60	2000	e11*2101



Tipo-Type	A (mm)	B (mm)	C (mm)	D (mm)	E (mm)	F (mm)	G (mm)
MH31-1	137	130	60	32	170	117	19
MH31-3	137	120	55	32	170	117	15



POS.	Tutti i tipi All types	Tipo - Type	
		MH 310 F1	MH 310 F3
1	RA00026		



MH 31H

Gancio CEE manuale flangiato pesante
Non-automatic CEE heavy trailer coupling
with flange bearing

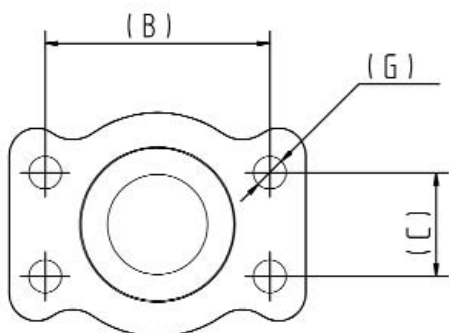
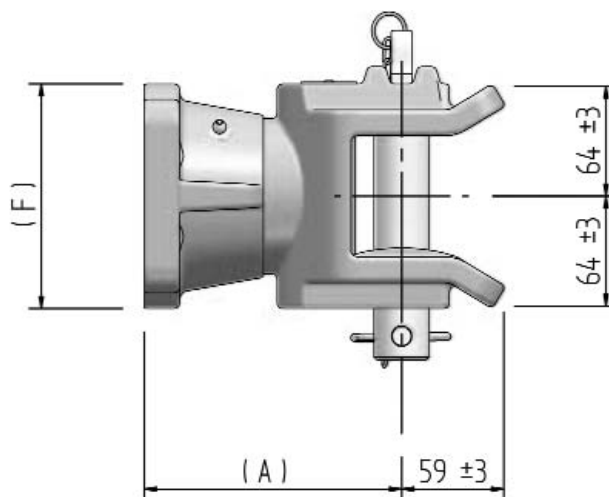
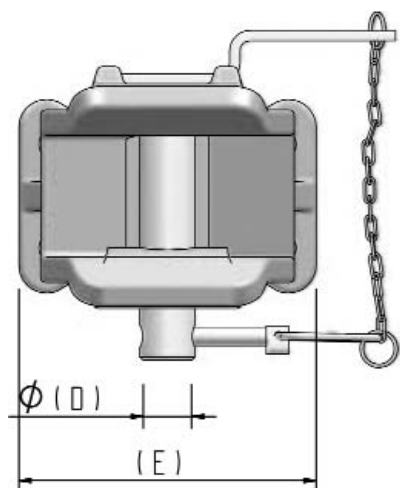
Per occhielli
For drawbar eyes

\emptyset
40/50

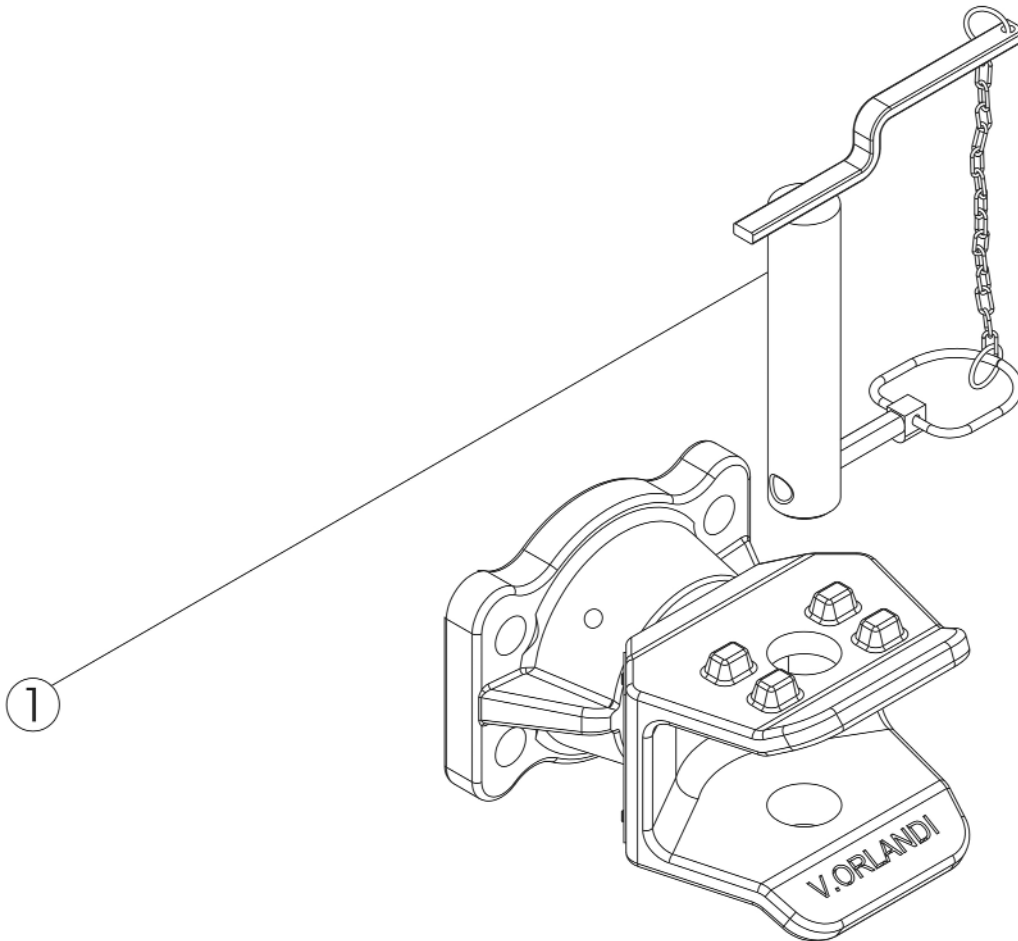
Riferimento - Reference:
DIN 11026-11043-74053-74054

Dati tecnici - Technical data

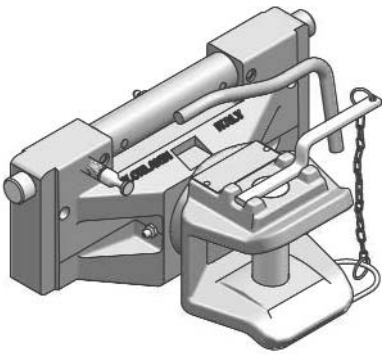
Tipo Type	Codice Article number	Flangia Hole pattern	Omologazione/Homologation 89/173/CE		
			Valore D D-Value (Kn)	Valore S S-Value (Kg)	N°
MH 31H-1	MH 31H E1	130 x 60	100	2500	e3*3010
MH 31H-4	MH 31H E4	140 x 80	100	2500	e3*3010



Tipo-Type	A (mm)	B (mm)	C (mm)	D (mm)	E (mm)	F (mm)	G (mm)
MH 31H-1	149	130	60	32	172	130	19
MH 31H-4	149	140	80	32	172	130	17



POS.	Tutti i tipi All types	Tipo - Type	
		MH 31H E1	MH 31H E4
1	RA00026		

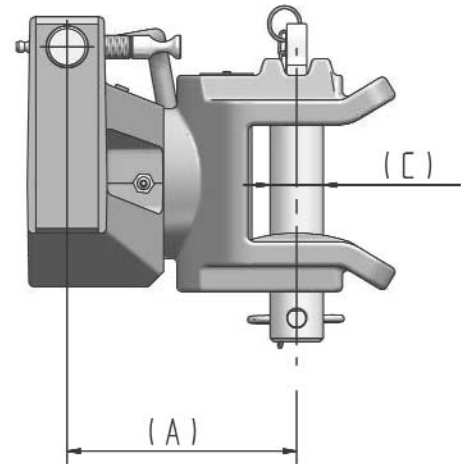
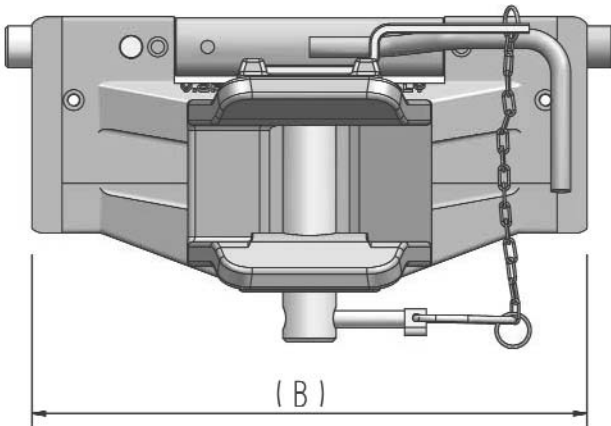


MH 31S

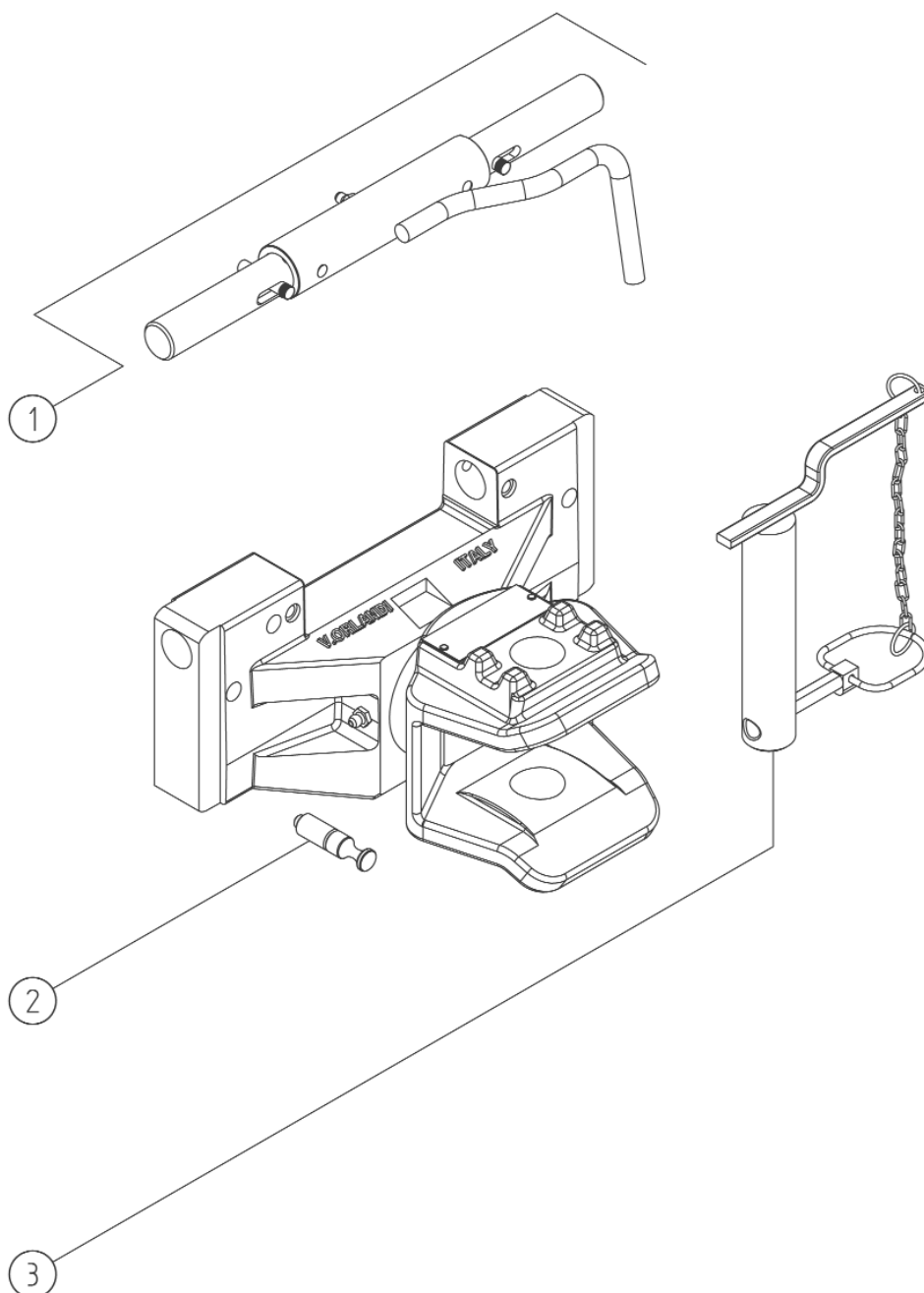
Gancio CEE manuale su slitta in fusione
 Non-automatic CEE trailer coupling
 with lift bearing

Per occhioni For drawbar eyes	\varnothing 40/50	Riferimento - Reference: DIN 11026-11043-74053-74054
----------------------------------	-------------------------------	---

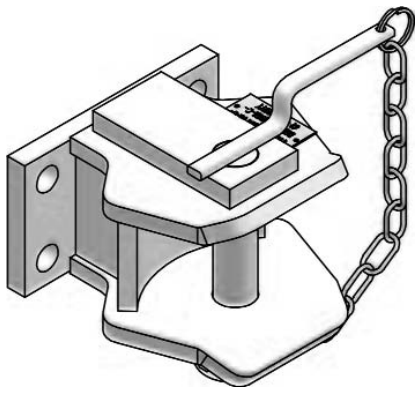
Dati tecnici - Technical data				
Tipo Type	Codice Article number	Omologazione/Homologation 89/173/CE		
		Valore D D-Value (Kn)	Valore S S-Value (Kg)	N°
MH 31S-1	MH 311 E8	84,3	2500	e11*2068
MH 31S-2	MH 312 E8	84,3	2500	e11*2068



Tipo-Type	A (mm)	B (mm)	C (mm)
MH31S-1	138	333,5	32
MH 31S-2	138	320	32



POS.	Tutti i tipi All types	Tipo - Type	
		MH 311 E8	MH 312 E8
1		RA00036	RA00037
2	RA00002		
3	RA00026		

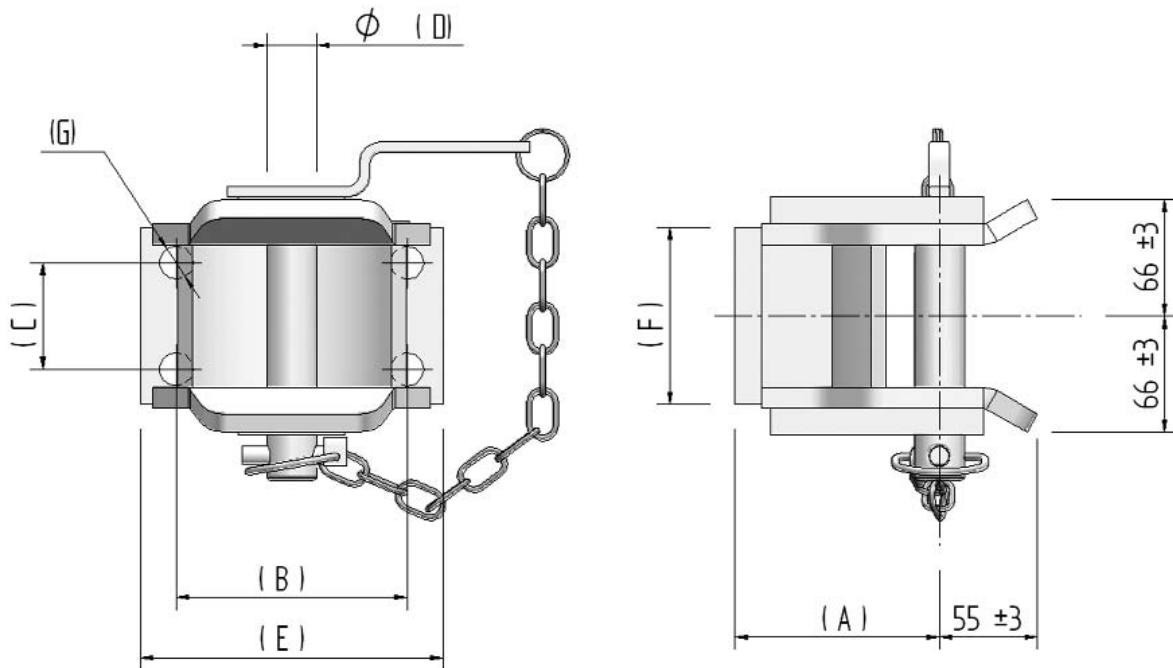


MH C

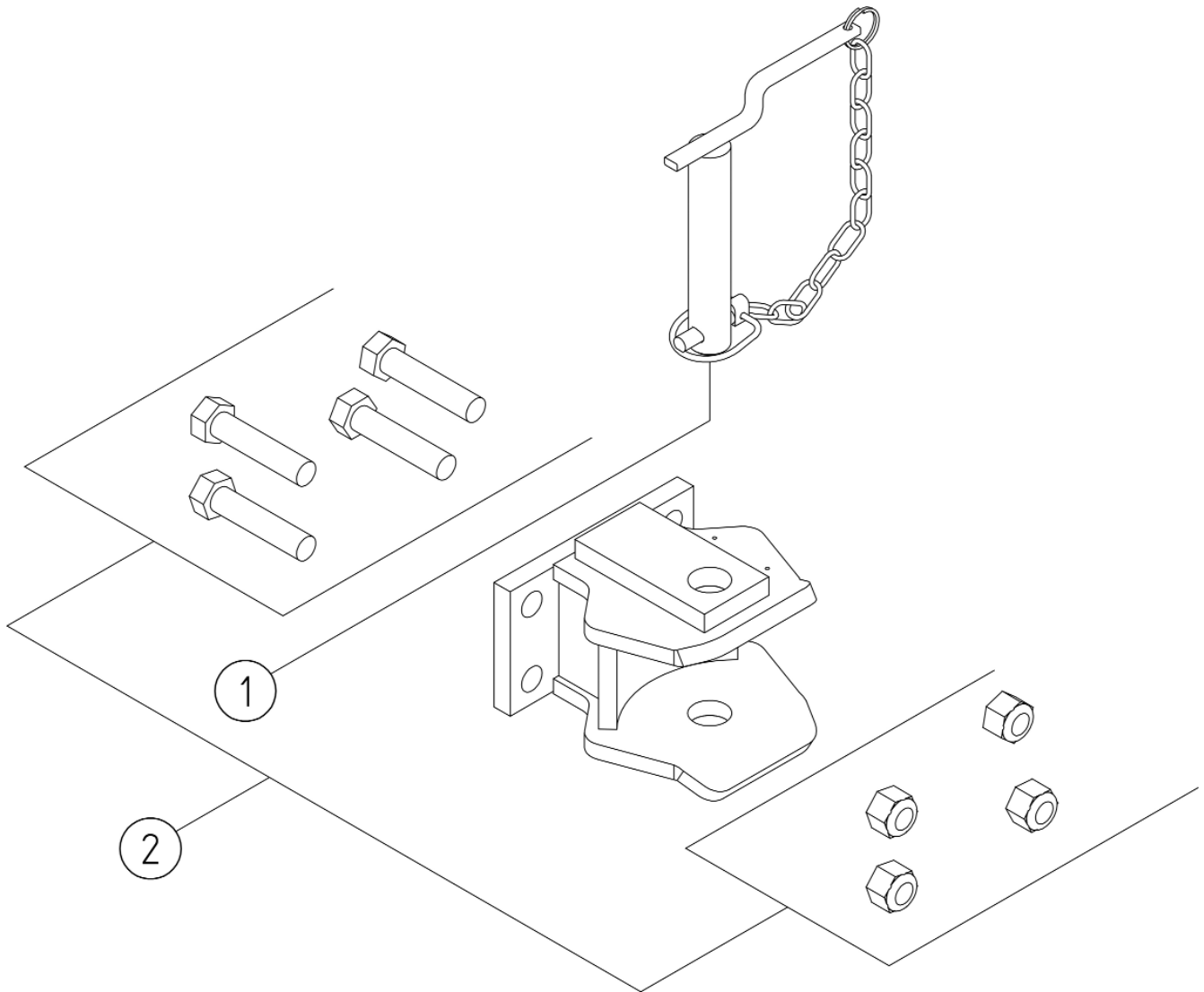
Gancio CUNA cat. C
Non-automatic CUNA cat. C trailer coupling

Per occhielli For drawbar eyes	Ø 45 cat. E3	Riferimento - Reference: NC 438-06
-----------------------------------	-------------------------------	---------------------------------------

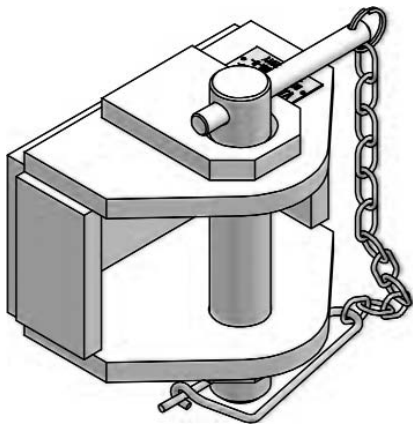
Dati tecnici - Technical data						
Tipo Type	Codice Article number	Flangia Hole pattern (mm)	Omologazione/Homologation CUNA 338-02			
			Car. Verticale Static Load (daN)	cat.	peso rimorc. total trailer weight (t)	N°
MH C-1	MH 000 G1	130 x 60	1500	C	6	DGM*3*0013GA
MH C-3	MH 000 G3	120 x 55	1500	C	6	-
MH C-3	MH 000 G4	140 x 80	1500	C	6	-



Tipo-Type	A (mm)	B (mm)	C (mm)	D (mm)	E (mm)	F (mm)	G (mm)
MH C-1	115	130	60	28	170	100	19
MH C-3	115	120	55	28	155	90	15
MH C-4	115	140	80	28	180	90	17



POS.	Tutti i tipi All types	Tipo - Type		
		MH 000 G1	MH 000 G3	MH 000 G4
1	RA00001			
2	RA00040			

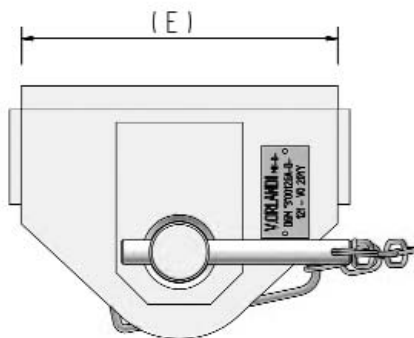
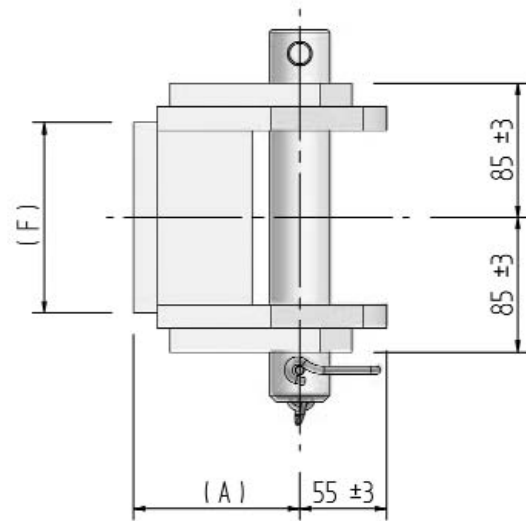
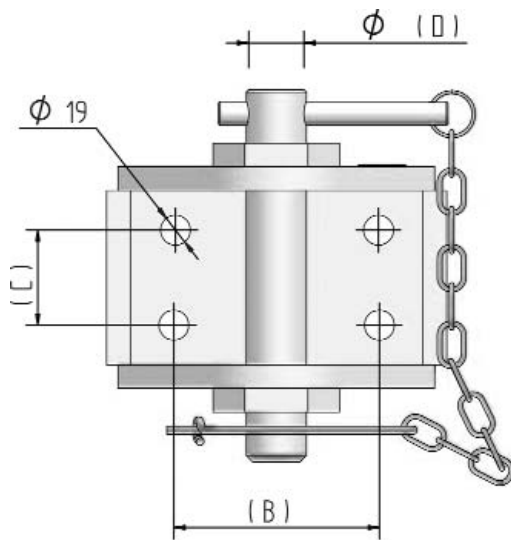


MH D

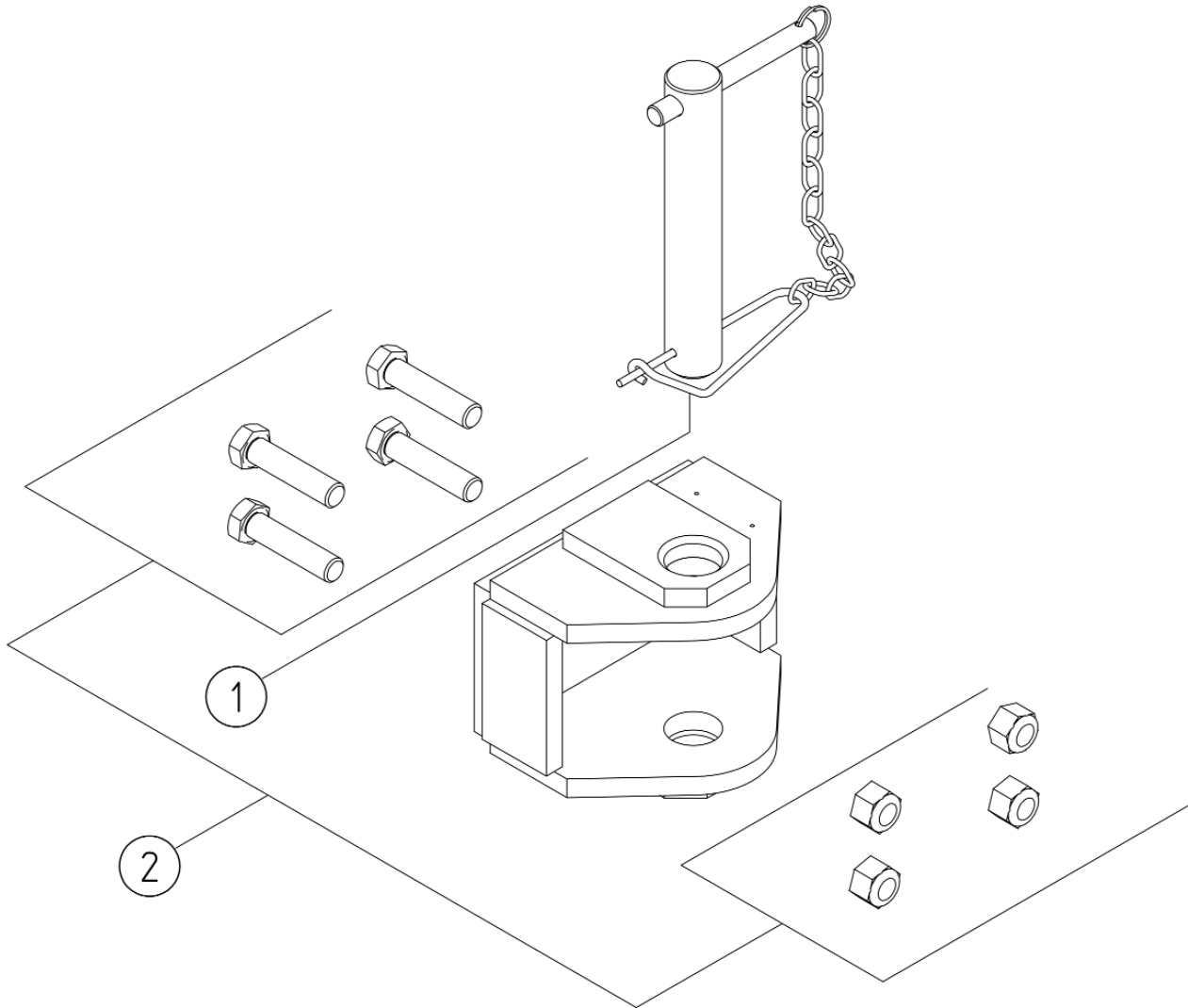
Gancio CUNA cat. D
Non-automatic CUNA "D" trailer coupling

Per occhioni For drawbar eyes	Ø 55 cat. F	Riferimento - Reference: NC 438-06
----------------------------------	------------------------------	---------------------------------------

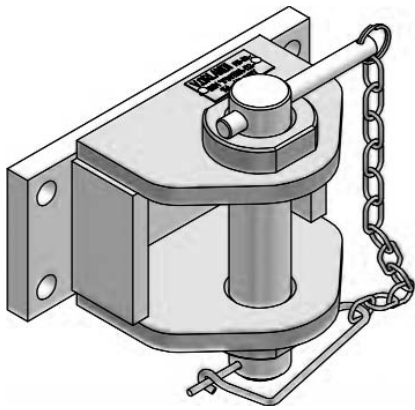
Dati tecnici - Technical data					
Tipo Type	Codice Article number	Flangia Hole pattern (mm)	Omologazione/Homologation CUNA 338-02		
			cat.	peso rimorc. total trailer weight (t)	N°
MH D-1	MH 000 H1	130 x 60	D	12	DGM*3*0012GA



TIPO TYPE	A (mm)	B (mm)	C (mm)	D (mm)	E (mm)	F (mm)
MH D-1	105	130	60	38	200	120



POS.	Tutti Tipi All Type	Tipo - Type
		MH 000 H1
1	RA00022	
2	RA00040	

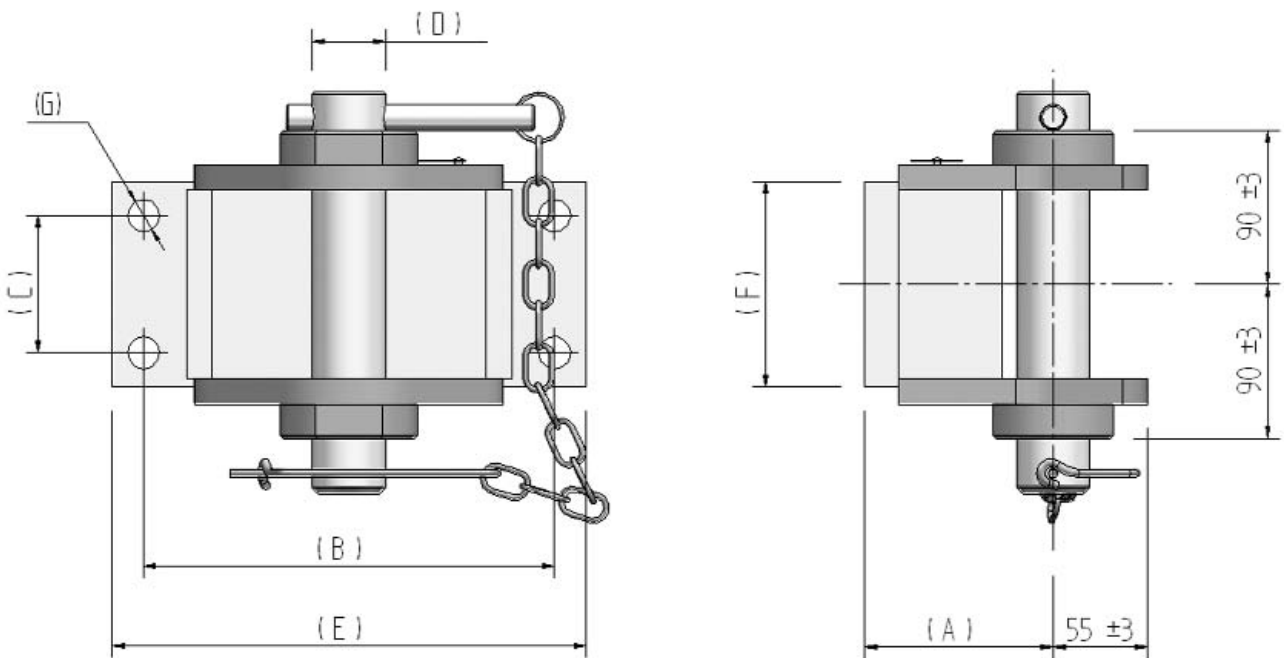


MH D2

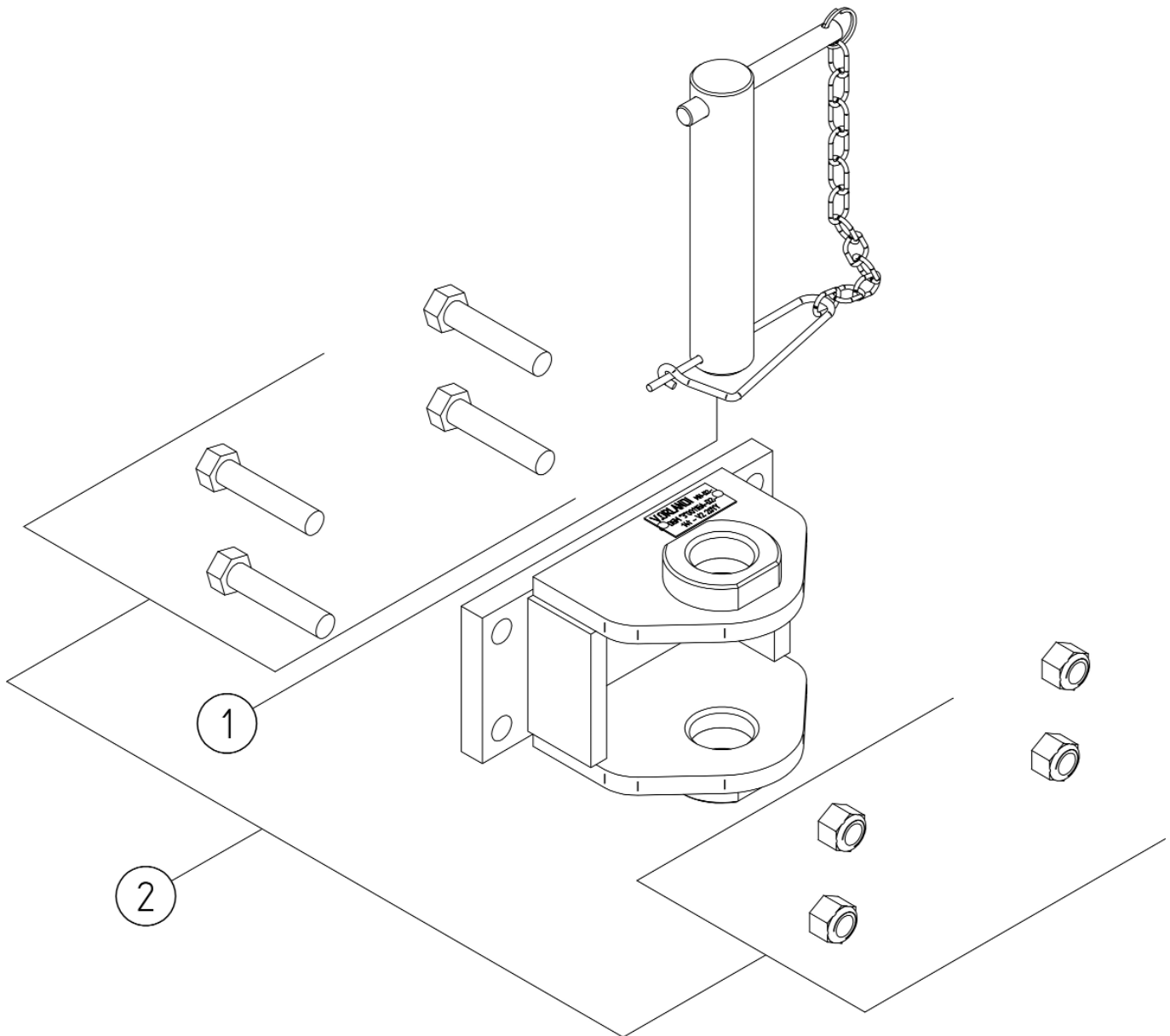
Gancio CUNA cat. D2
Non-automatic CUNA cat. D2 trailer coupling

Per occhioli For drawbar eyes	Ø 62 cat. F2	Riferimento - Reference: NC 438-06
----------------------------------	-------------------------------	---------------------------------------

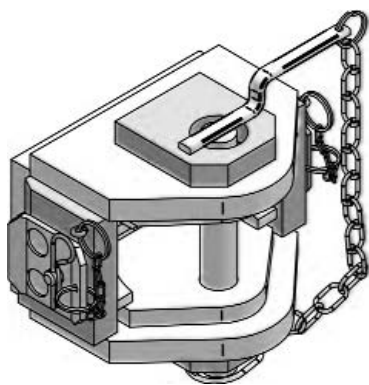
Dati tecnici - Technical data						
Tipo Type	Codice Article number	Flangia Hole pattern (mm)	Omologazione/Homologation CUNA 338-02			
			Car. Verticale Static Load (daN)	cat.	peso rimorc. total trailer weight (t)	N°
MH D2-1	MH 000 I1	130 x 60	2000	D2	14	-
MH D2-2	MH 000 I2	240 x 80	2000	D2	14	DGM*3*0011GA
MH D2-4	MH 000 I4	140 x 80	2000	D2	14	-



Tipo-Type	A (mm)	B (mm)	C (mm)	D (mm)	E (mm)	F (mm)	G (mm)
MH D2-1	110	130	60	43	285	120	19
MH D2-2	110	240	80	43	277	120	19
MH D2-4	120	140	80	43	200	120	17



POS.	Tutti i tipi All types	Tipo - Type - Typ - Type		
		MH 000 I1	MH 000 I2	MH 000 I4
1	RA00023			
2	RA00040			

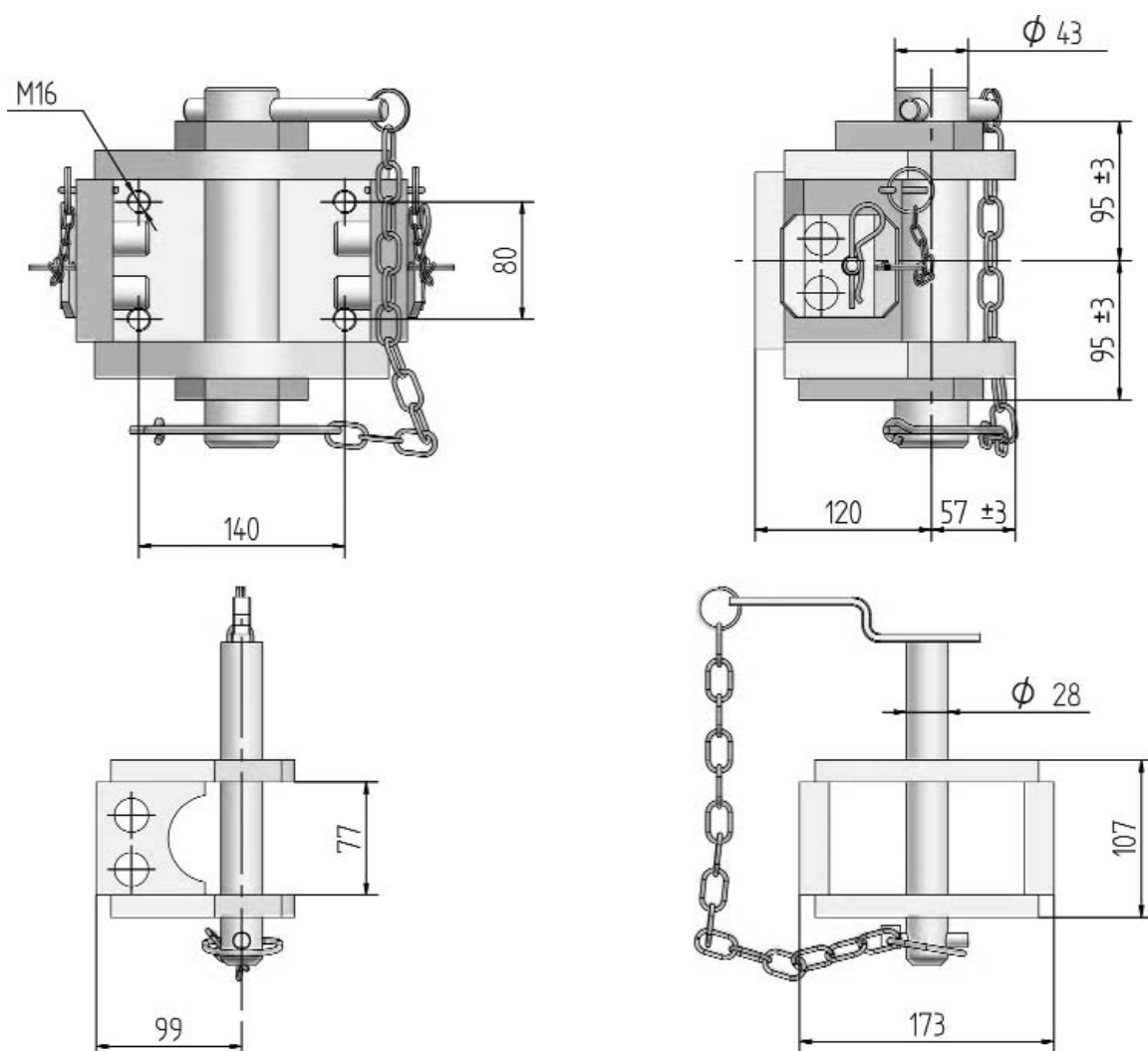


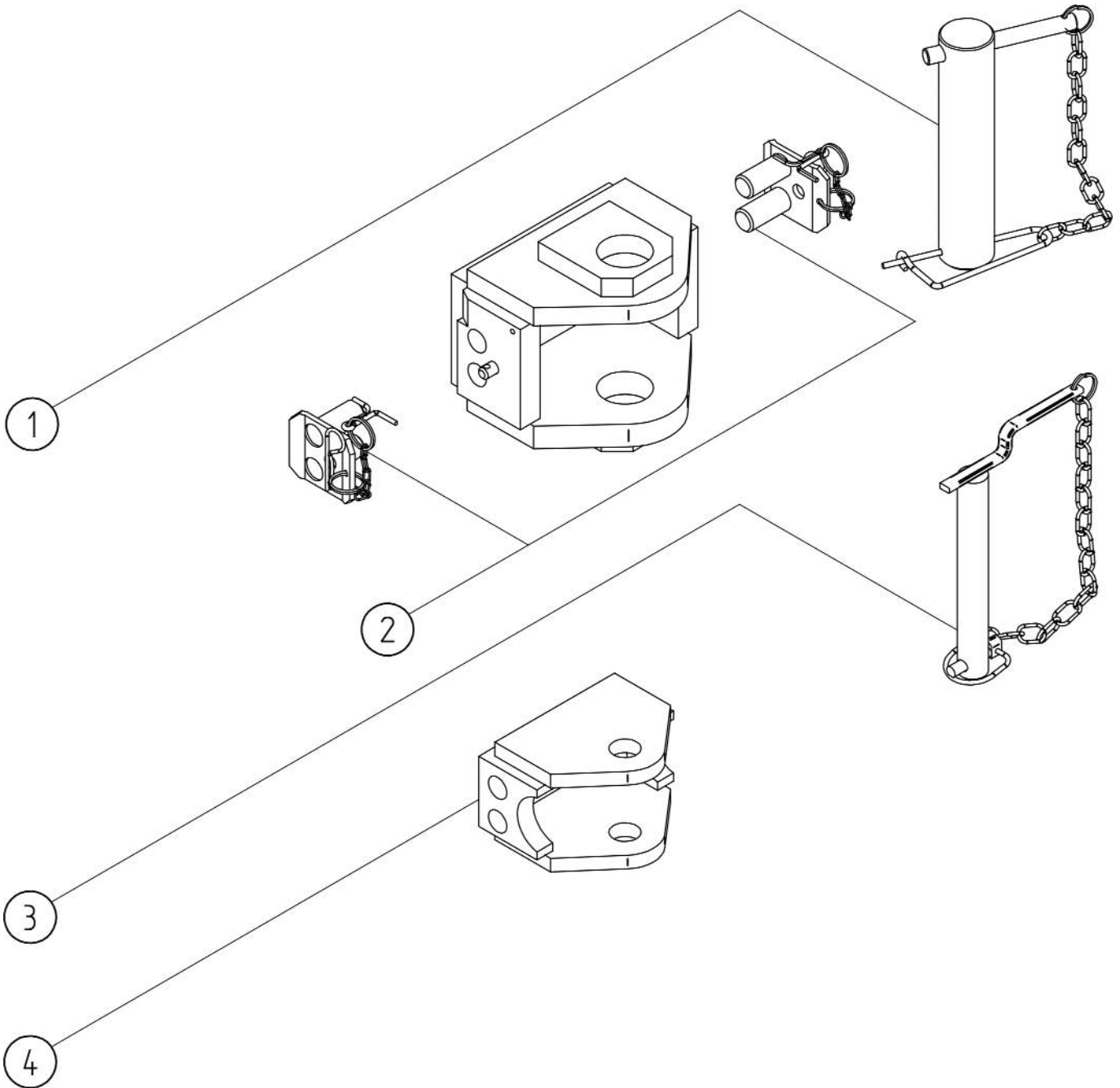
MH D2M

Sistema Matrioska D2/C
Non-automatic "Matrioska" trailer coupling

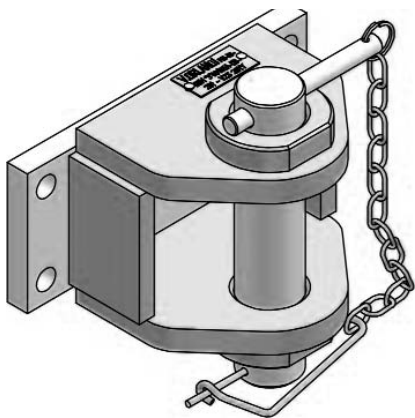
Per occhielli For drawbar eyes	Ø 45/62 cat. E3/F2	Riferimento - Reference: NC 438-06
-----------------------------------	-------------------------------------	---------------------------------------

Dati tecnici - Technical data						
Tipo Type	Codice Article number	Flangia Hole pattern (mm)	Omologazione/Homologation CUNA 338-02			
			Car. Verticale Static Load (daN)	cat.	peso rimorc. total trailer weight (t)	N°
MH D2M	MH 000 L4	140 x 80	2000	D2	14	DGM 4658 GA
			1500	C	6	DGM 4657 GA





POS.	Tipo - Type
1	RA00023
2	RA00053
3	RA00056
4	RA00054

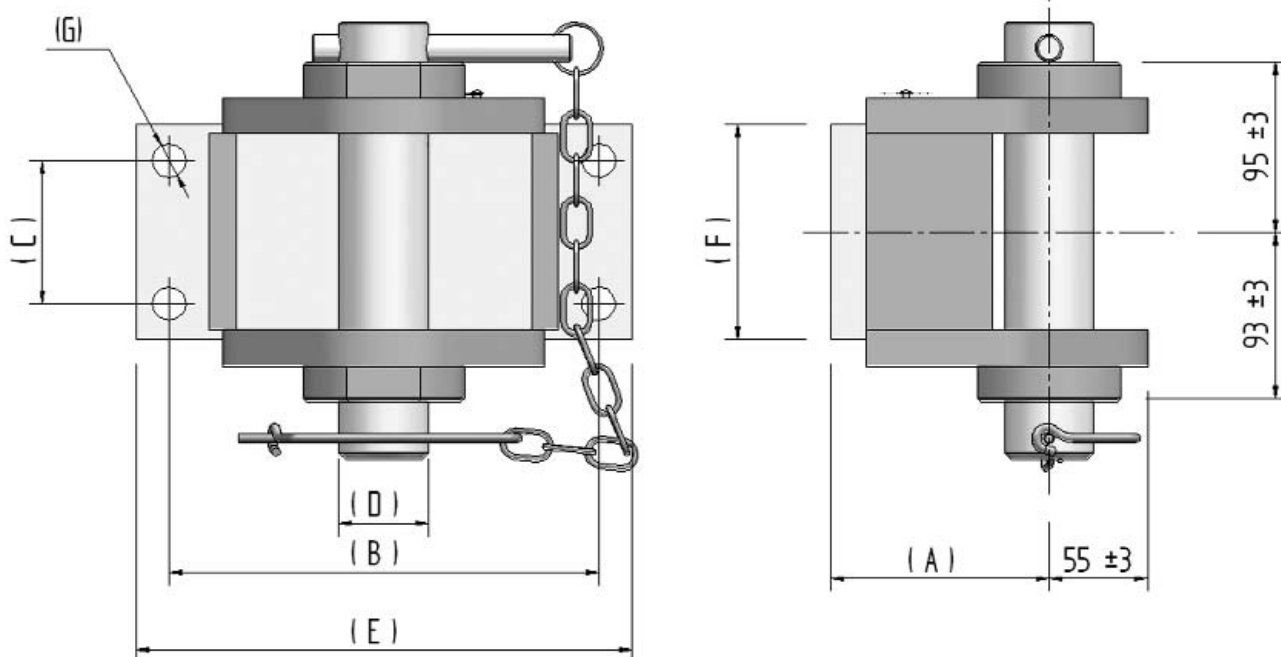


MH D3

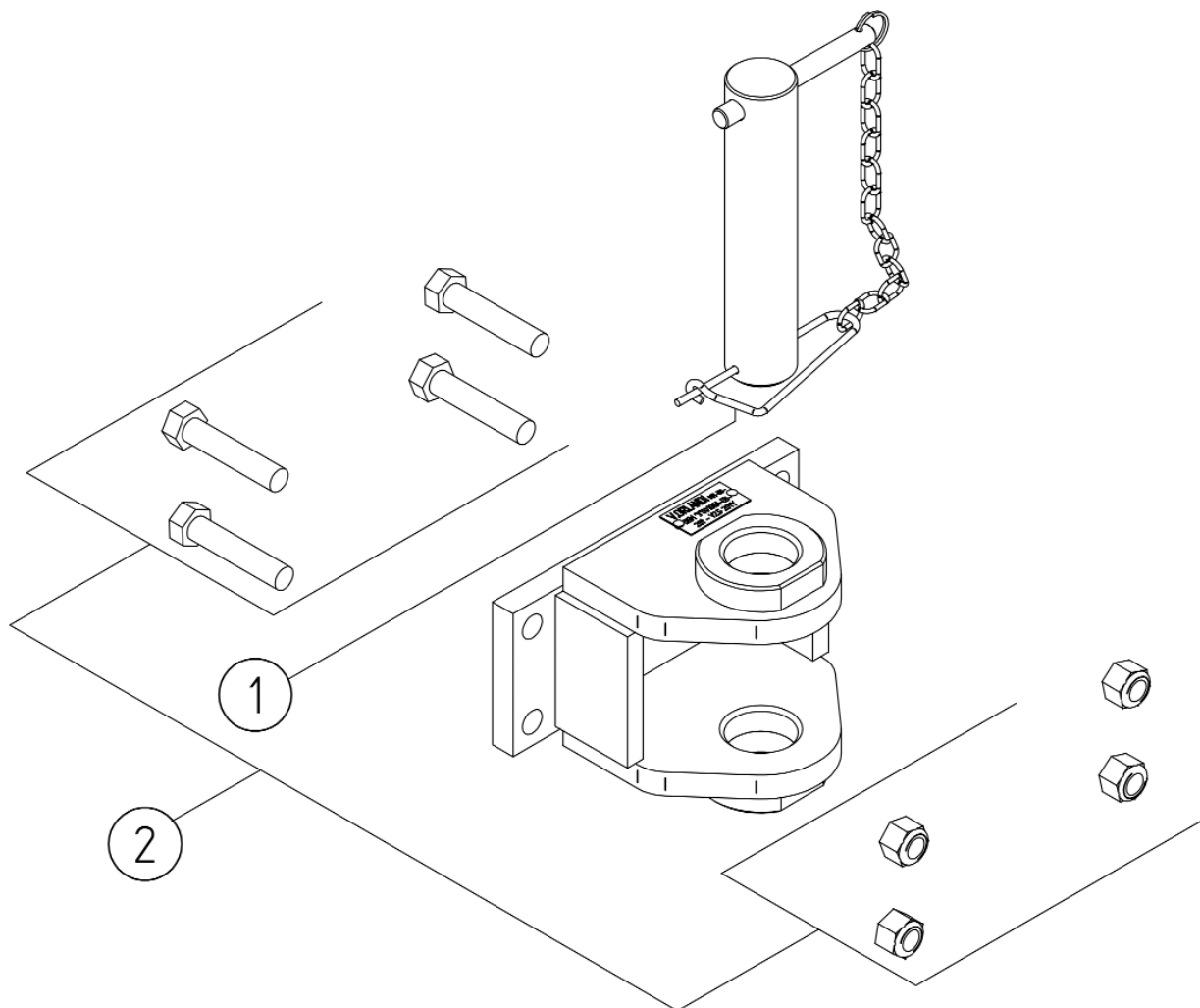
Campana CUNA cat. D3
Non-automatic CUNA D3 trailer coupling

Per occhielli For drawbar eyes	Ø 73 cat. F3	Riferimento - Reference: NC 438-06
-----------------------------------	-------------------------------	---------------------------------------

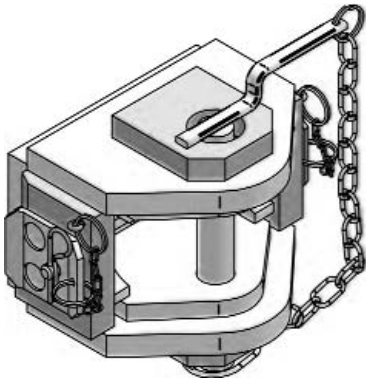
Dati tecnici - Technical data						
Tipo Type	Codice Article number	Flangia Hole pattern (mm)	Omologazione/Homologation CUNA 338-02			
			Car. Verticale Static Load (daN)	cat.	peso rimorc. total trailer weight (t)	N°
MH D3-1	MH 000 K1	130 x 60	2500	D3	20	-
MH D3-2	MH 000 K2	240 x 80	2500	D3	20	DGM*3*0010GA
MH D3-4	MH 000 K4	140 x 80	2500	D3	20	-



Tipo-Type	COD.	A (mm)	B (mm)	C (mm)	D (mm)	E (mm)	F (mm)	G (mm)
MH D3-1	MH 000 K1	122	130	60	50	200	130	19
MH D3-2	MH 000 K2	122	240	80	50	277	120	19
MH D3-4	MH 000 K4	120	140	80	50	200	120	17



POS.	Tutti i tipi All types	Tipo - Type		
		MH 000 K1	MH 000 K2	MH 000 K4
1	RA00024			
2	RA00040			



MH D3M

Sistema Matrioska D3/C
Non-automatic CUNA D3/C
Matrioska System

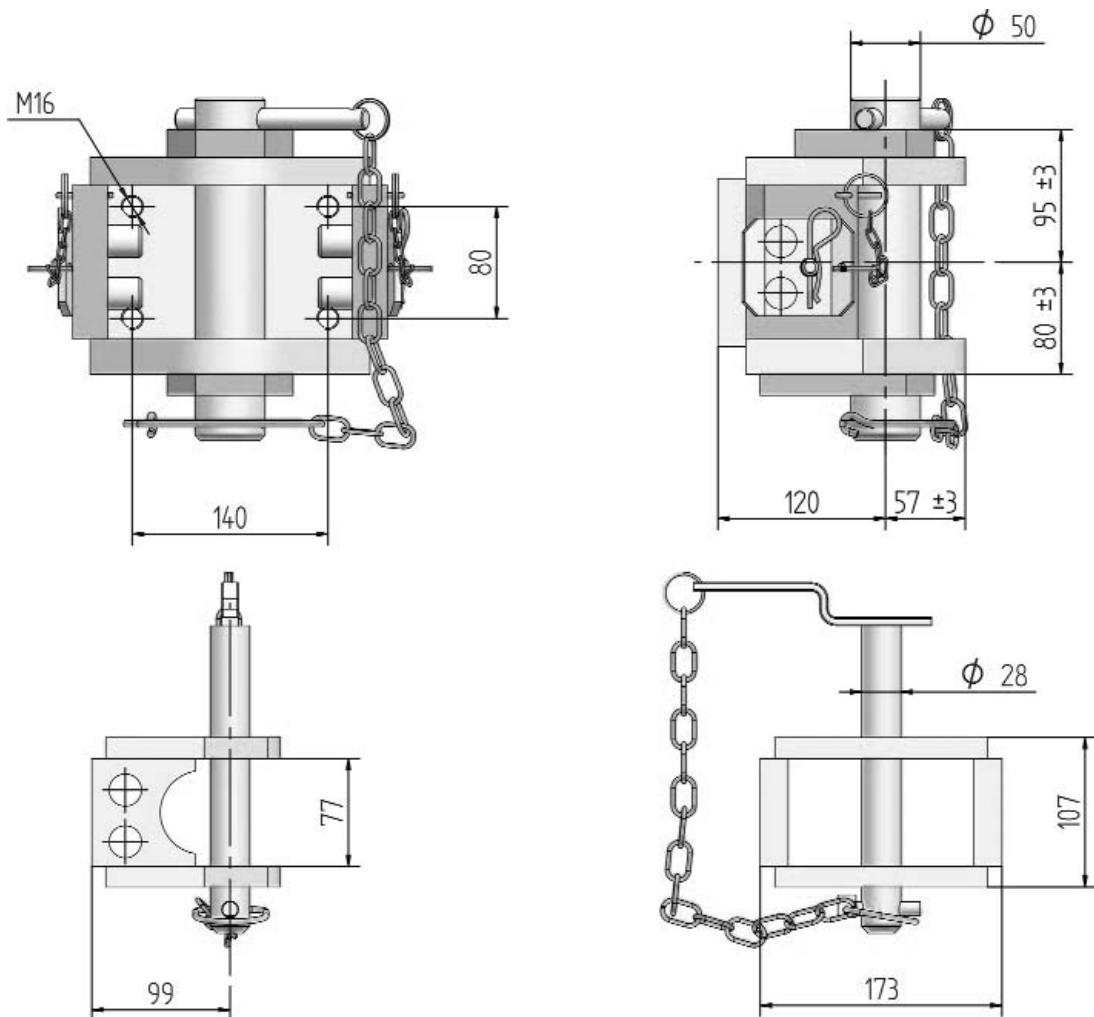
Per occhioni
For drawbar eyes

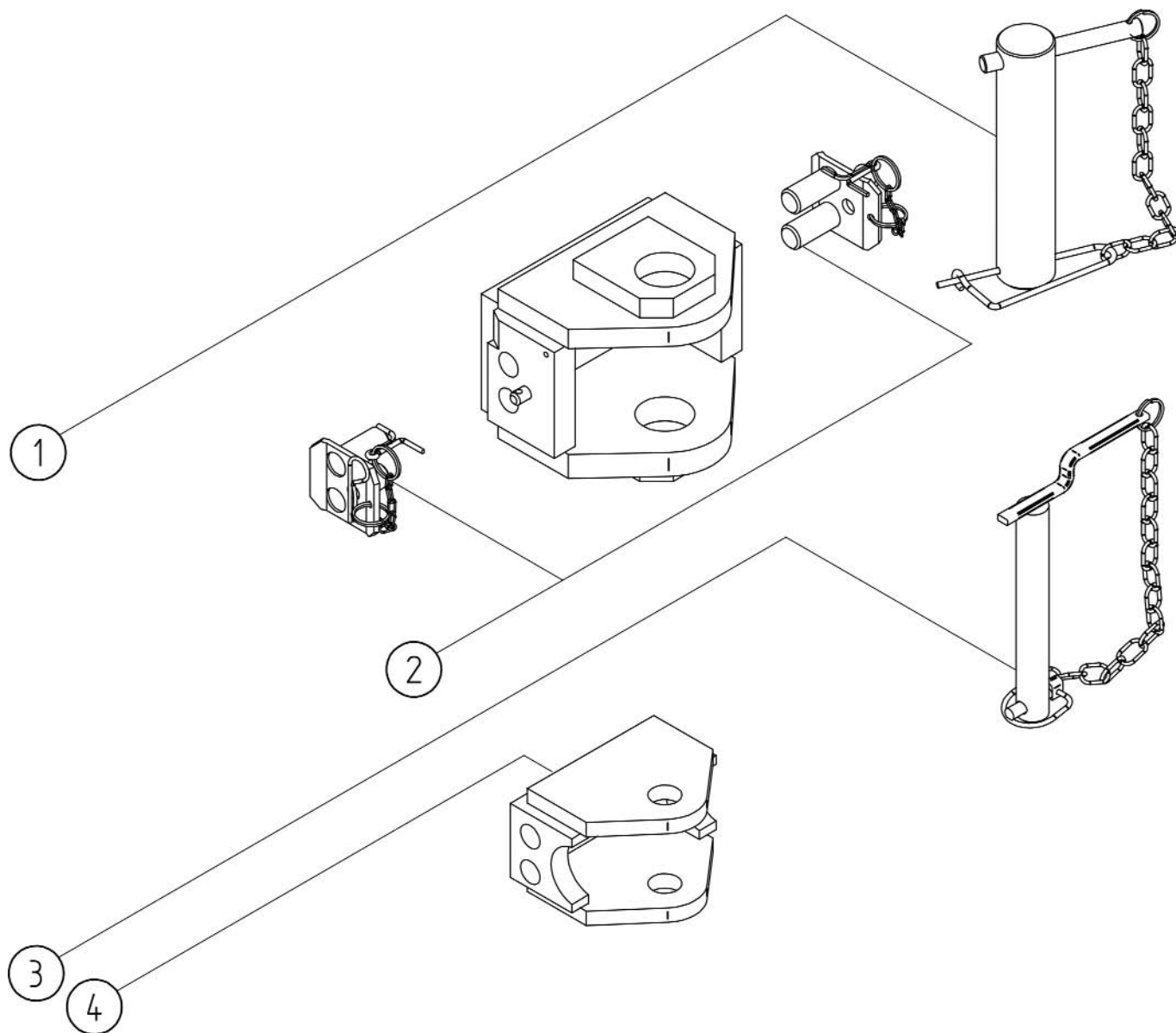
Ø 45/73
cat. E3/F3

Riferimento - Reference:
NC 438-06

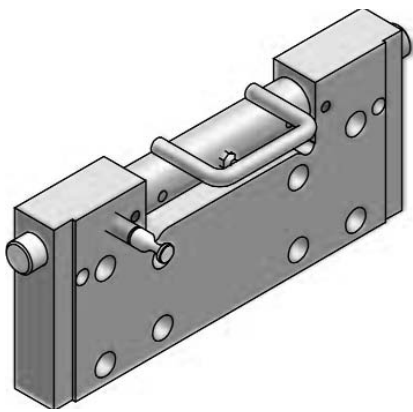
Dati tecnici - Technical data

Tipo Type	Codice Article number	Flangia Hole pattern (mm)	Omologazione/Homologation CUNA 338-02			
			Car. Verticale Static Load (daN)	cat.	peso rimorc. total trailer weight (t)	N°
MH D3M	MH 000 M4	140 x 80	2500	D3	20	DGM 4659 GA
			1500	C	6	DGM 4657 GA



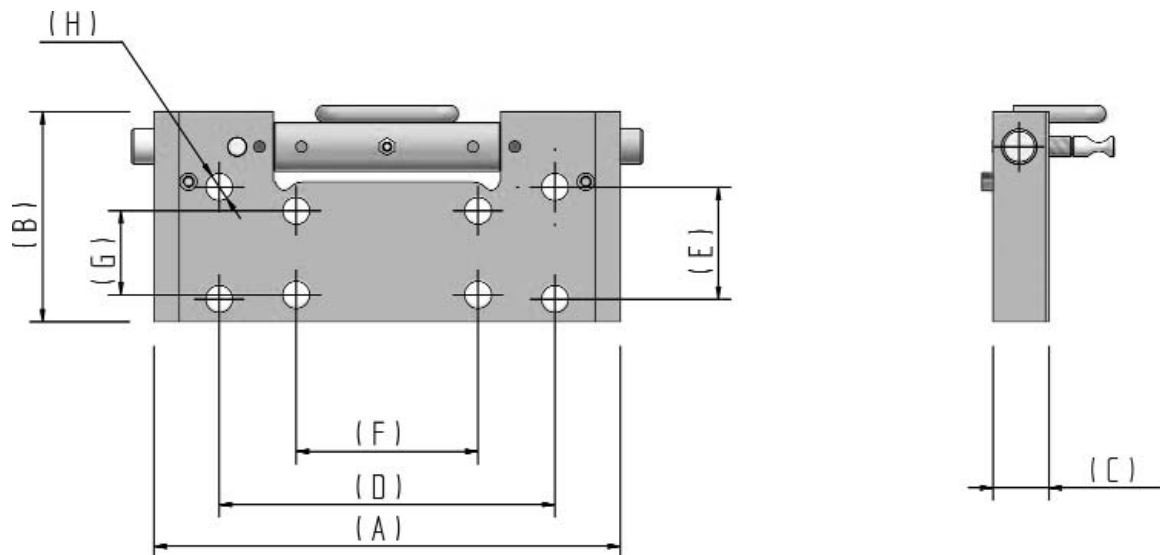


POS.	Tipo - Type
1	RA00024
2	RA00053
3	RA00056
4	RA00054

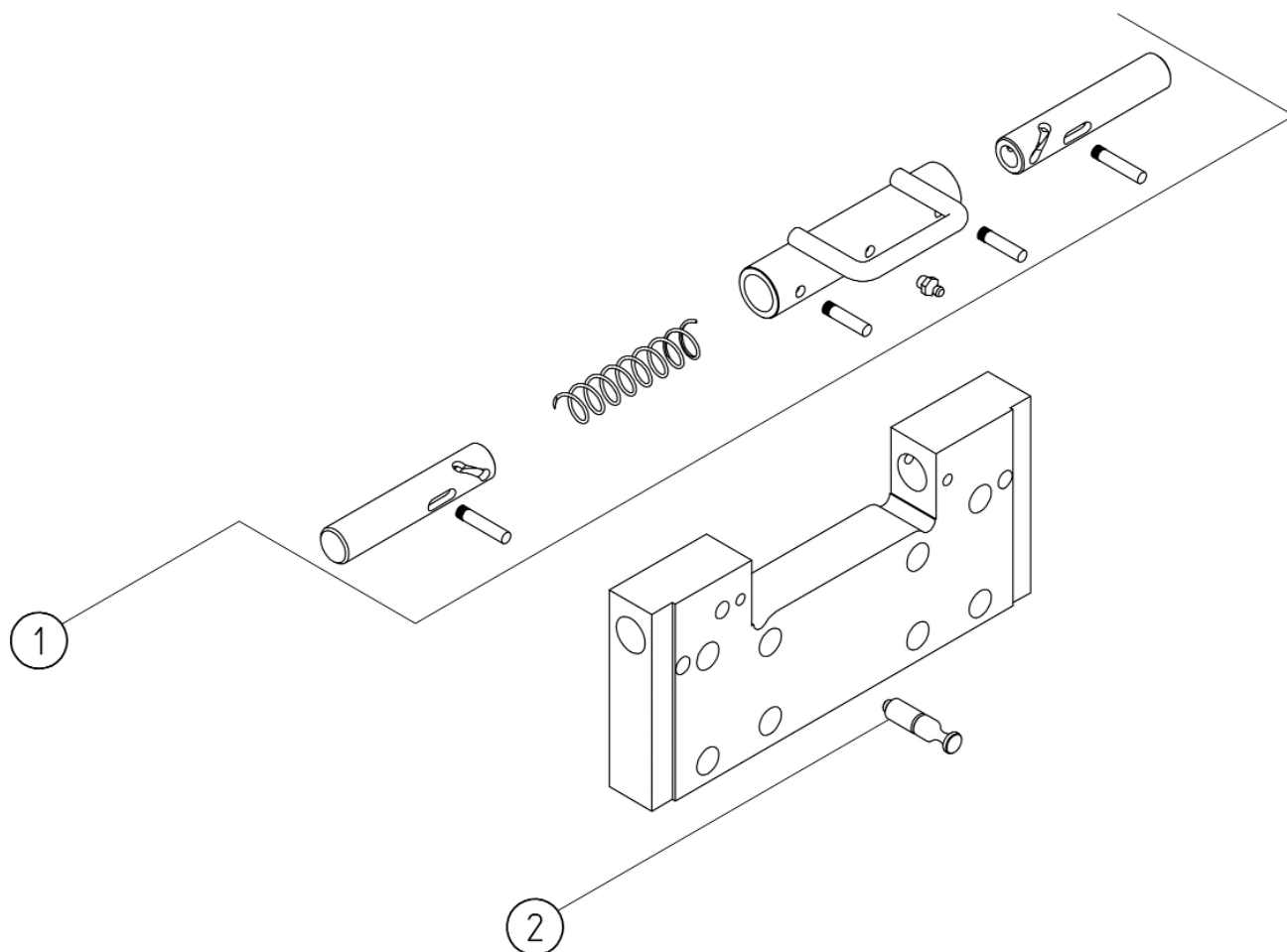


LB 40

Slitta flangiata
Flanged lift bearing



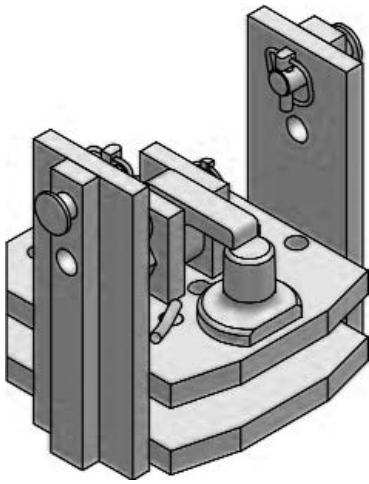
Tipo-Type	COD.	A (mm)	B (mm)	C (mm)	D (mm)	E (mm)	F (mm)	G (mm)	H (mm)
LB 40-1	LB 40 100	333,5	150	40	240	80	130	60	19,5
LB 40-2	LB 40 200	320	150	40	240	80	130	60	19,5
LB 40-3	LB 40 300	310	150	40	240	80	130	60	19,5
LB 40-4	LB 40 400	306	150	40	-	-	130	60	19,5
LB 40-5	LB 40 500	260	150	40	-	-	130	60	M18
LB 40-6	LB 40 600	240	150	40	-	-	120	55	15,5



POS.	Tutti i tipi All types	Codice - Article Number					
		LB 40 100	LB 40 200	LB 40 300	LB 40 400	LB 40 500	LB 40 600
1		RA00041	RA00042	RA00043	RA00044	RA00045	RA00046
2	RA00002						

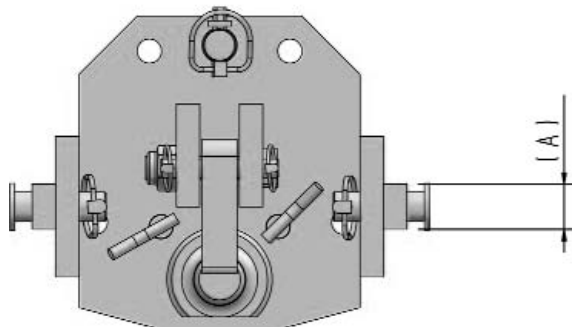
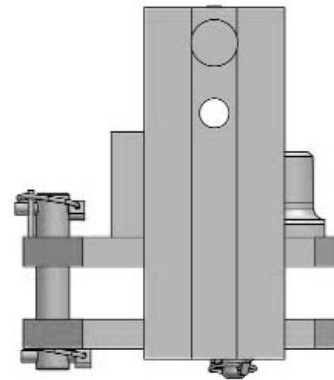
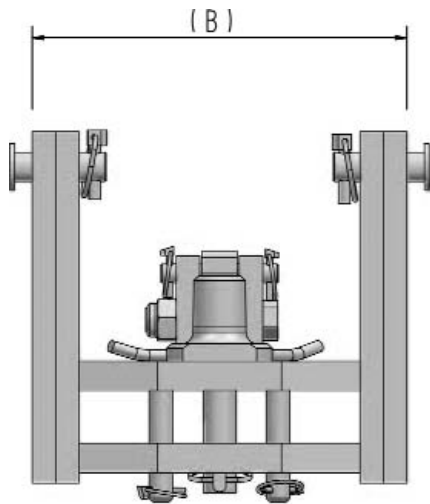
SP 38

piton fix removibile
removable piton fix

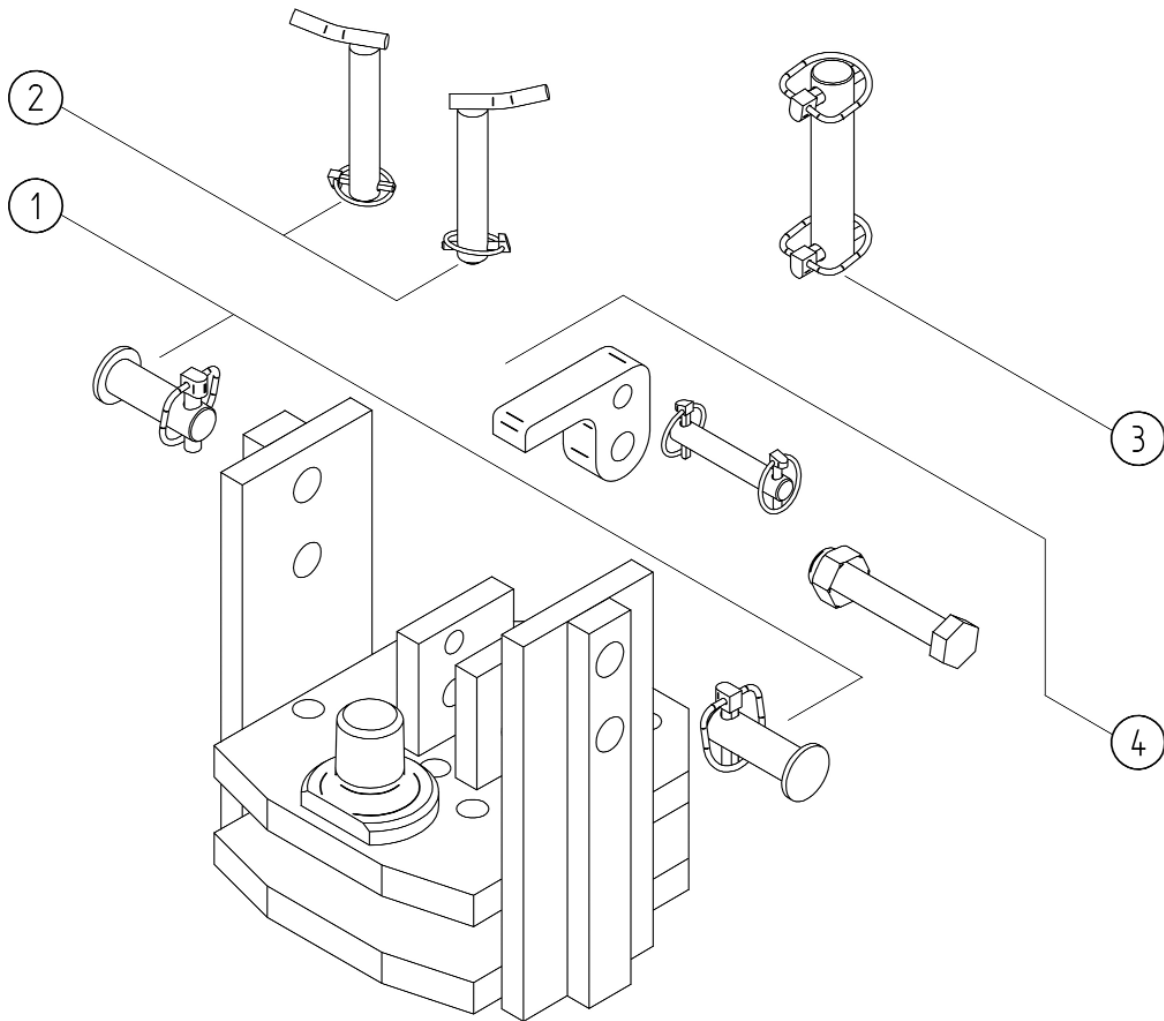


Per occhioni For drawbar eyes	∅ 50	Riferimento - Reference: DIN 9678
----------------------------------	-----------------	--------------------------------------

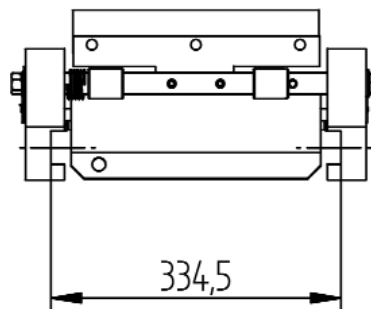
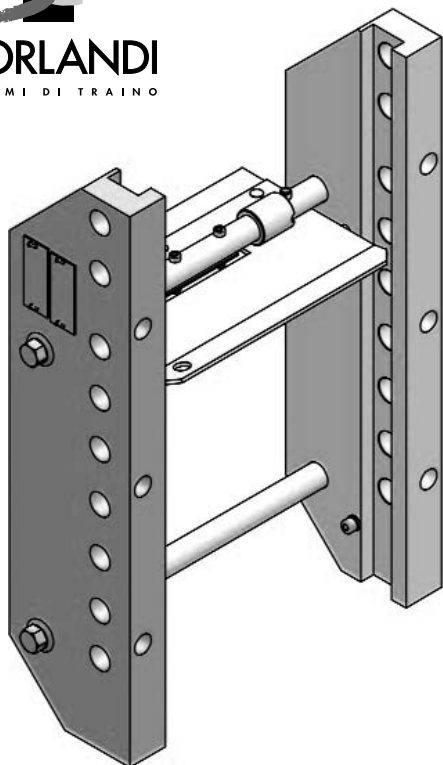
Dati tecnici - Technical data				
Tipo Type	Codice Article number	Omologazione/Homologation DIN 9678		
		Car. Verticale Static Load (daN)	peso rimorc. total trailer weight (t)	N°
SP 38-2	SP 38 200	1000	15	e11-2085
SP 38-5	SP 38 500	1000	15	e11-2085



Tipo-Type	COD.	A (mm)	B (mm)
SP 38-2	SP 38 200	37,5	320
SP 38-5	SP 38 500	37,5	260

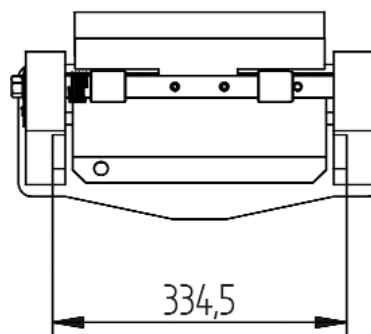
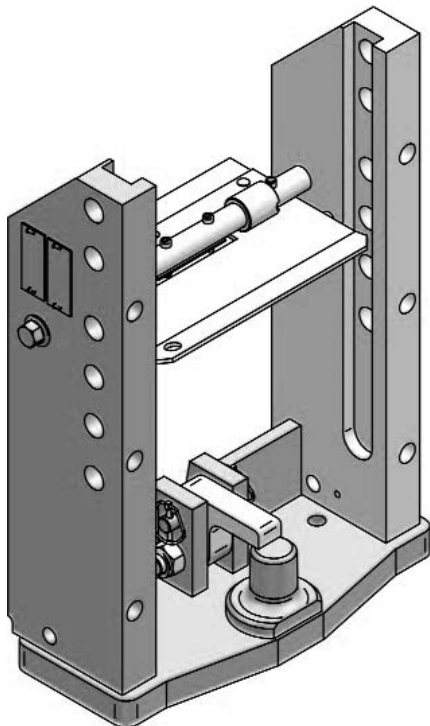


POS.	Tutti i tipi All types	Codice - Article Number	
		SP 38 200	SP 38 500
1	RA00061		
2	RA00062		
3	RA00063		
4	RA00064		



Dati tecnici - Technical data

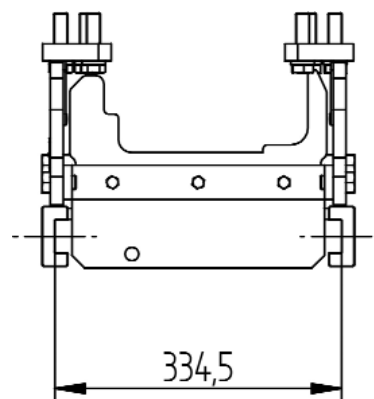
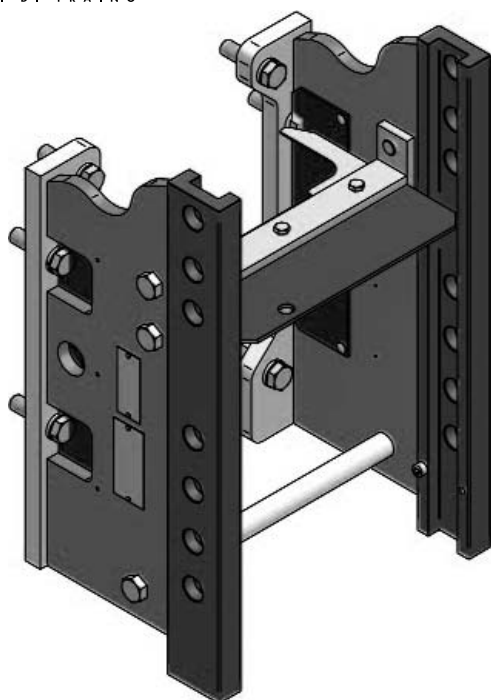
Tipo Type	Codice Art. Number	Omologazione CUNA Homologation CUNA			Omologazione CEE Homologation CEE		
		carico statico (daN) static load (daN)	peso rimorchiabile (t) total trailer weight (t)	cat.	D (kn)	S (kg)	Nr.
JD 60	JD 60 000	2500	20	D3	84,3	2500	e11*1181



Dati tecnici - Technical data

Tipo Type	Codice Art. Number	Omologazione CEE Homologation CEE		
		D (kn)	S (kg)	Nr.
JD 6F	JD 6F 000	84,3	3000	e1*0178

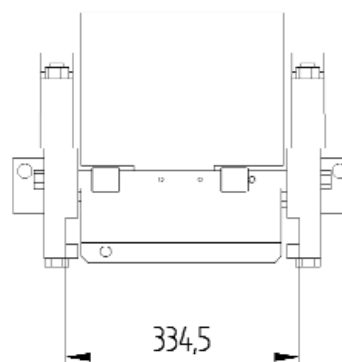
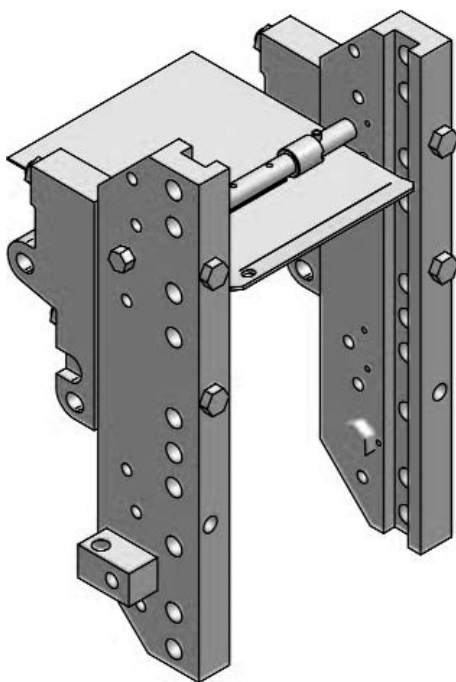
Serie JD 5020



Dati tecnici - Technical data

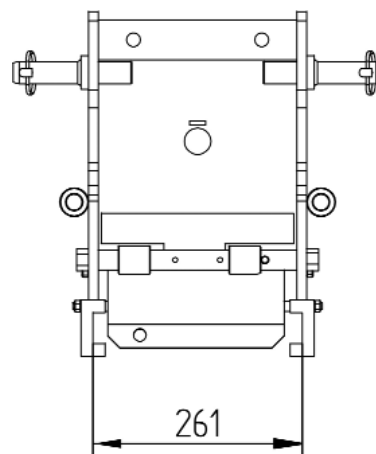
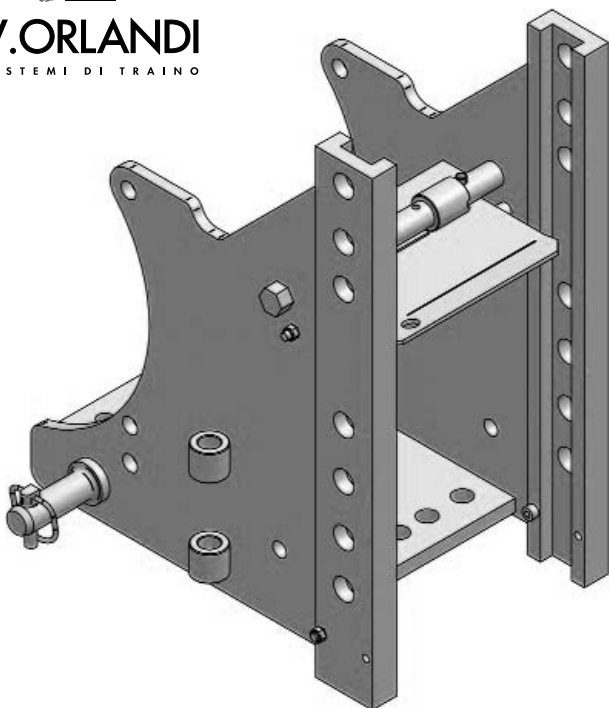
Tipo Type	Codice Art. Number	Omologazione CUNA Homologation CUNA			Omologazione CEE Homologation CEE		
		carico statico (daN) static load (daN)	peso rimorchiabile (t) total trailer weight (t)	cat.	D (kn)	S (kg)	Nr.
JD 52	JD 52 000	2500	20	D3	54	2000	e11*2100

Serie JD 8000



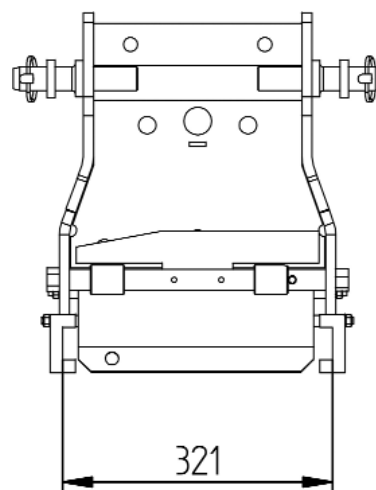
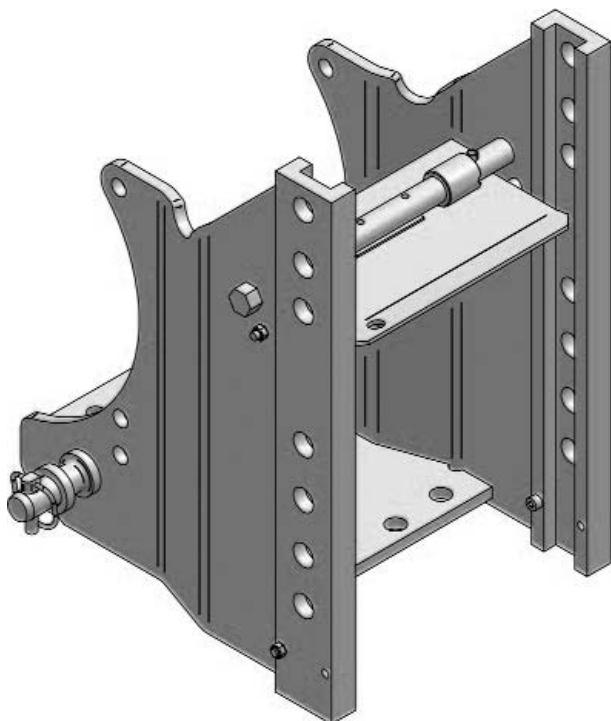
Dati tecnici - Technical data

Tipo Type	Codice Art. Number	Omologazione CUNA Homologation CUNA			Omologazione CEE Homologation CEE		
		carico statico (daN) static load (daN)	peso rimorchiabile (t) total trailer weight (t)	cat.	D (kn)	S (kg)	Nr.
JD 80	JD 80 000	2500	20	D3	84,3	2500	e11*1181



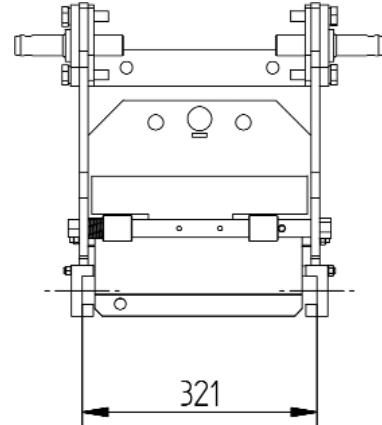
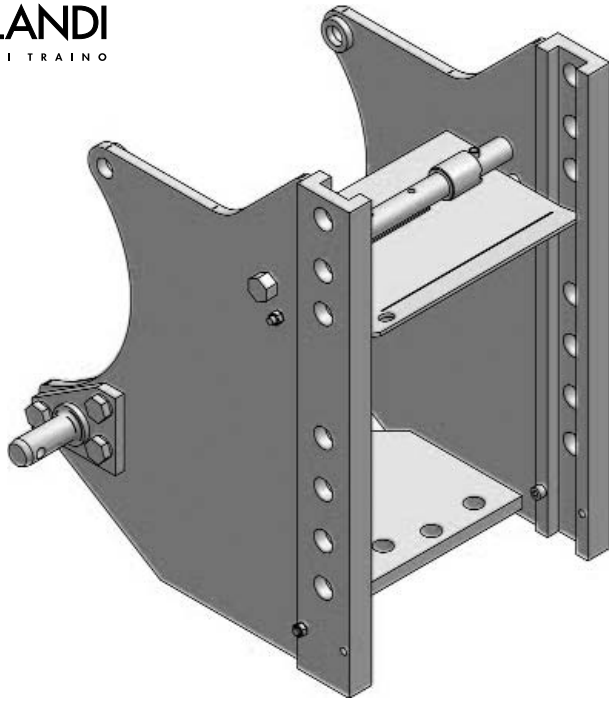
Dati tecnici - Technical data

Tipo Type	Codice Art. Number	Omologazione CUNA Homologation CUNA		
		carico statico (daN) static load (daN)	peso rimorchiabile (t) total trailer weight (t)	cat.
KB 57	KB 57 000	2000	14	D2



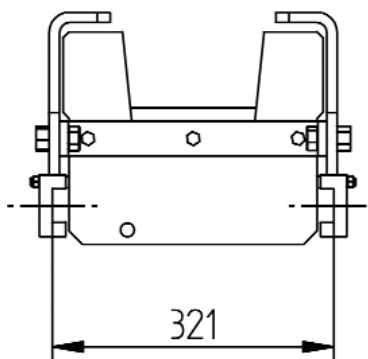
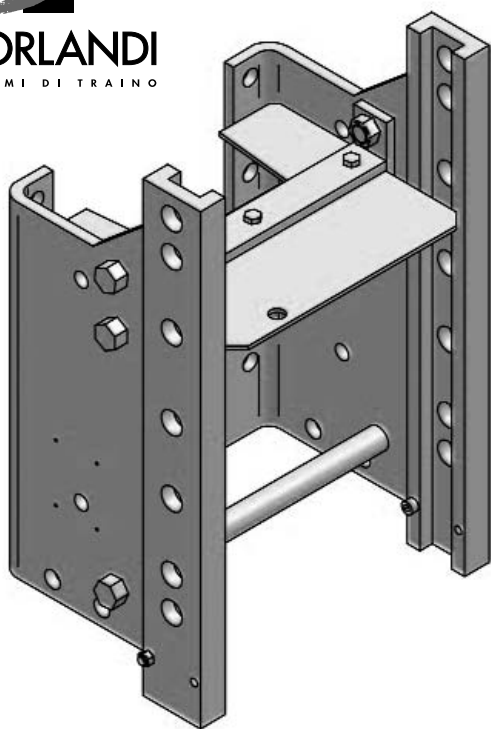
Dati tecnici - Technical data

Tipo Type	Codice Art. Number	Omologazione CUNA Homologation CUNA		
		carico statico (daN) static load (daN)	peso rimorchiabile (t) total trailer weight (t)	cat.
KB 58	KB 58 000	2000	14	D2



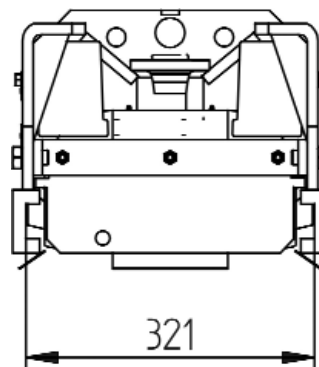
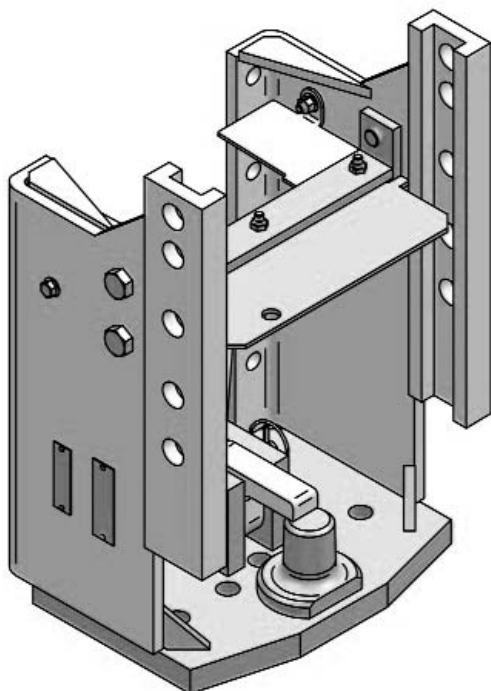
Dati tecnici - Technical data

Tipo Type	Codice Art. Number	Omologazione CUNA Homologation CUNA		
		carico statico (daN) static load (daN)	peso rimorchiabile (t) total trailer weight (t)	cat.
KB 82	KB 82 000	2000	14	D2



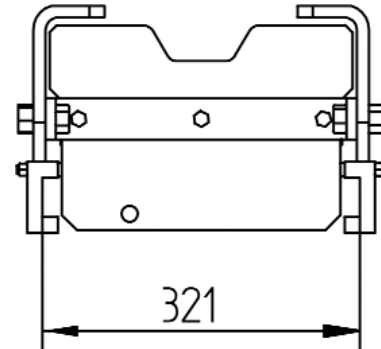
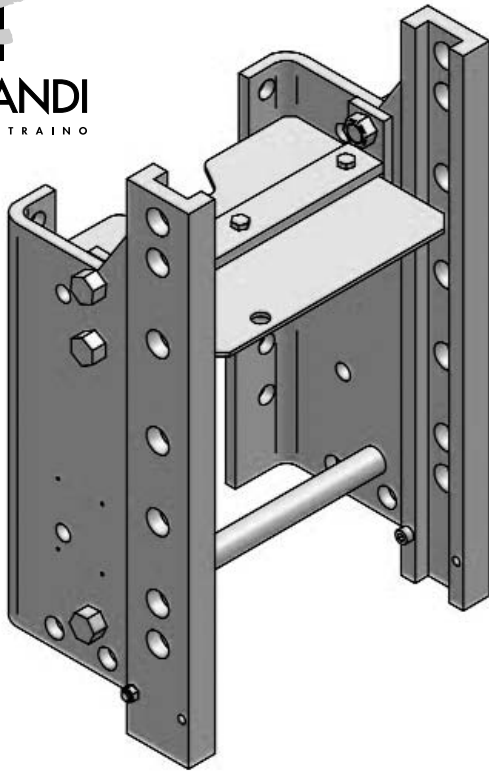
Dati tecnici - Technical data

Tipo Type	Codice Art. Number	Omologazione CUNA Homologation CUNA			Omologazione CEE Homologation CEE		
		carico statico (daN) static load (daN)	peso rimorchiabile (t) total trailer weight (t)	cat.	D (kn)	S (kg)	Nr.
LA 1H	LA 1H 000	2000	14	D2	56,25	2000	e11*2062



Dati tecnici - Technical data

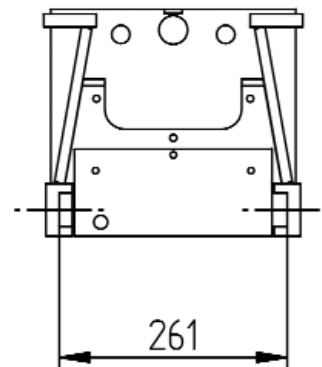
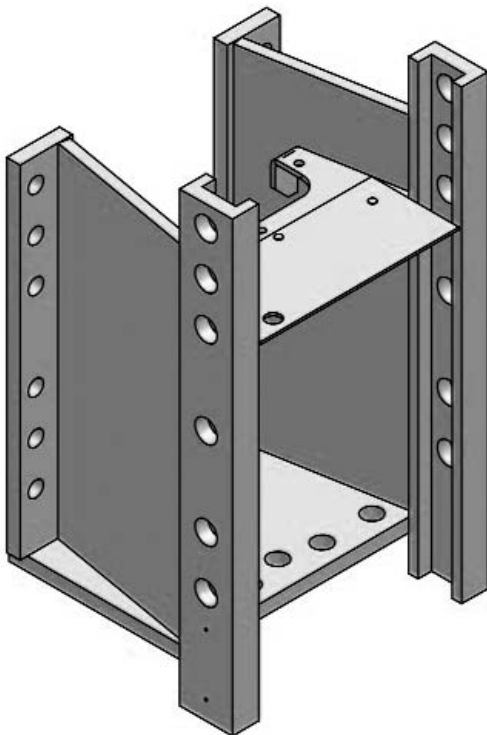
Tipo Type	Codice Art. Number	Omologazione CEE Homologation CEE		
		D (kn)	S (kg)	Nr.
LA 1F	LA 1F 000	56,65	2200	e11*2063



Dati tecnici - Technical data

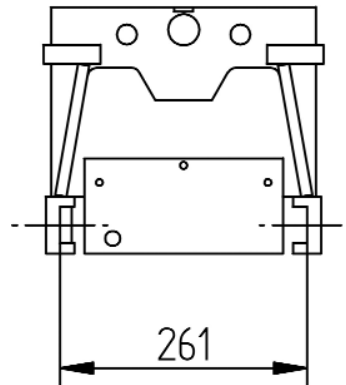
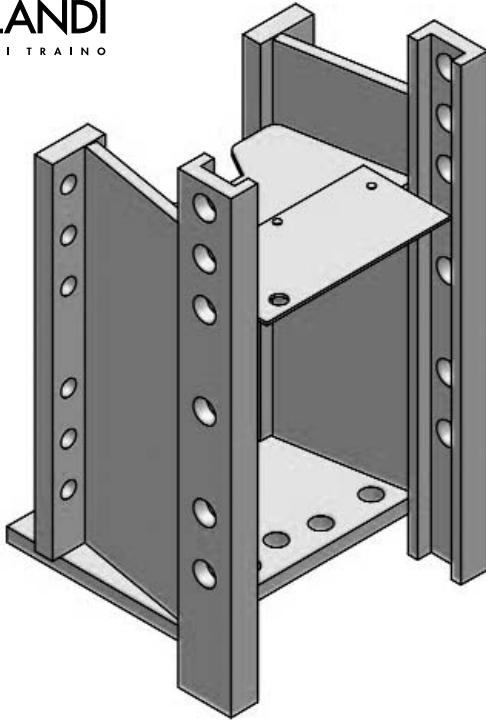
Tipo Type	Codice Art. Number	Omologazione CUNA Homologation CUNA			Omologazione CEE Homologation CEE		
		carico statico (daN) static load (daN)	peso rimorchiabile (t) total trailer weight (t)	cat.	D (kn)	S (kg)	Nr.
LA 1C	LA 1C 000	2000	14	D2	56,65	2000	e11*2062

Serie Rex Frutteto - Vigneto



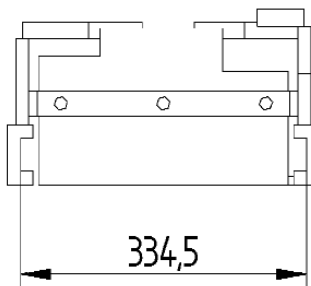
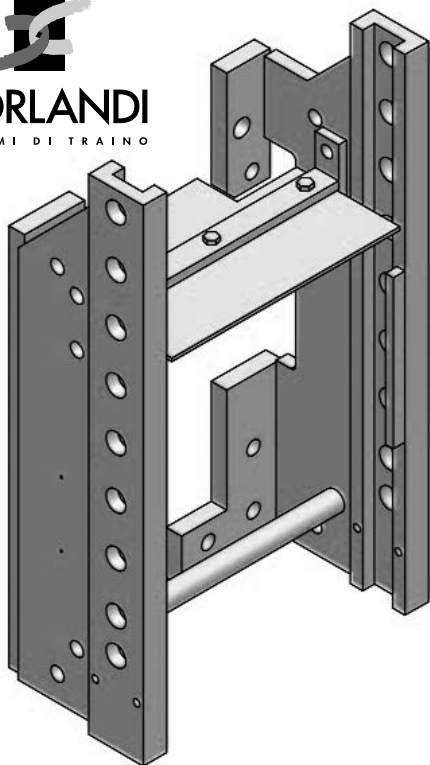
Dati tecnici - Technical data

Tipo Type	Codice Art. Number	Omologazione CUNA Homologation CUNA			Omologazione CEE Homologation CEE		
		carico statico (daN) static load (daN)	peso rimorchiabile (t) total trailer weight (t)	cat.	peso rimorchiabile (t) total trailer weight (t)	S (kg)	Nr.
LA FV	LA FV 000	2000	14	D2	14	2000	e11*2082



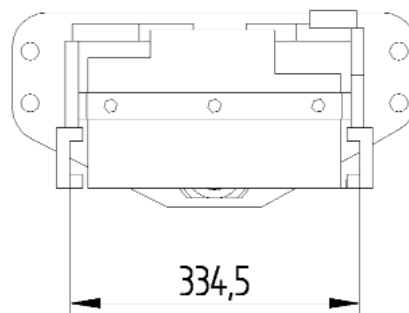
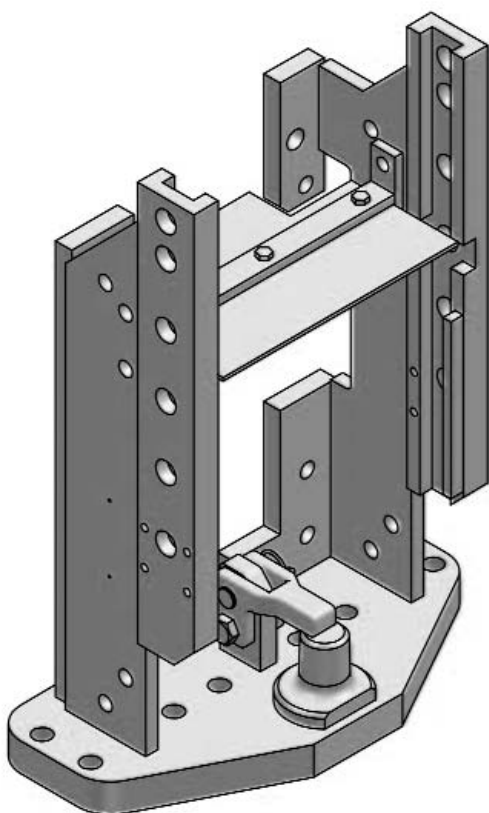
Dati tecnici - Technical data

Tipo Type	Codice Art. Number	Omologazione CUNA Homologation CUNA			Omologazione CEE Homologation CEE		
		carico statico (daN) static load (daN)	peso rimorchiabile (t) total trailer weight (t)	cat.	D (kn)	S (kg)	Nr.
LA FZ	LA FZ 000	2000	14	D2	2000	14	e11*2082



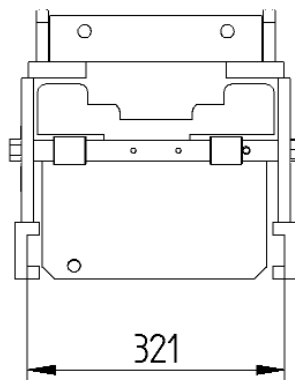
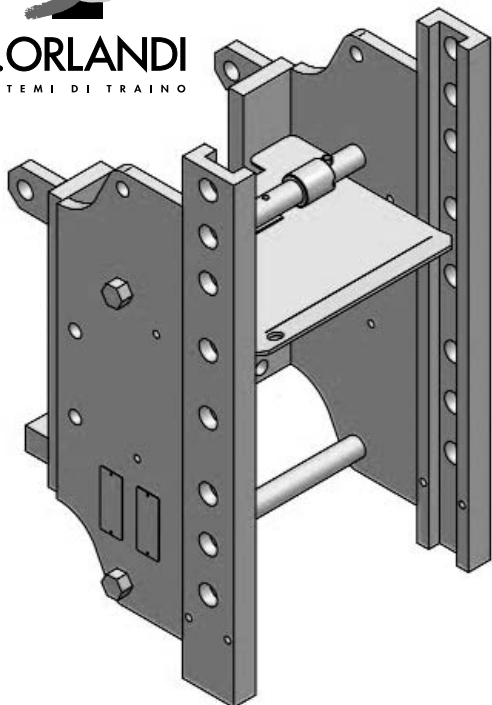
Dati tecnici - Technical data

Tipo Type	Codice Art. Number	Omologazione CUNA Homologation CUNA			Omologazione CEE Homologation CEE		
		carico statico (daN) static load (daN)	peso rimorchiabile (t) total trailer weight (t)	cat.	D (kn)	S (kg)	Nr.
MC X5	MC X5 000	2500	20	D3	84	2000	e11*2099



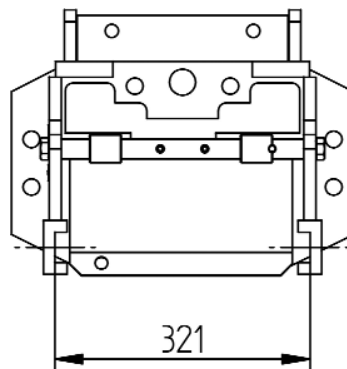
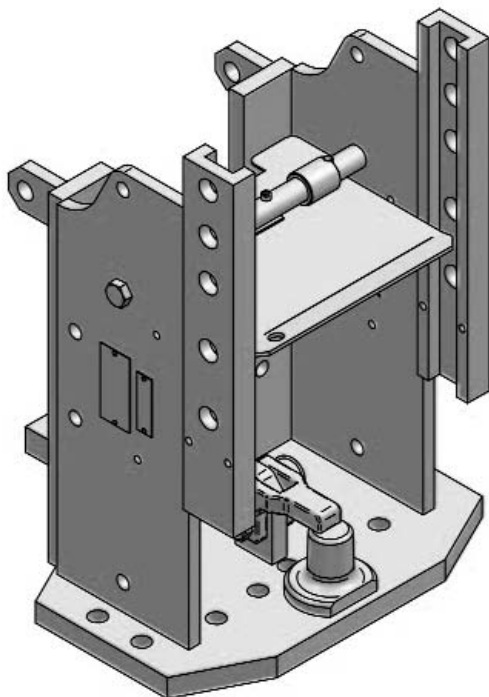
Dati tecnici - Technical data

Tipo Type	Codice Art. Number	Omologazione CEE Homologation CEE		
		D (kn)	S (kg)	Nr.
MC XF	MC XF 000	84	2000	-



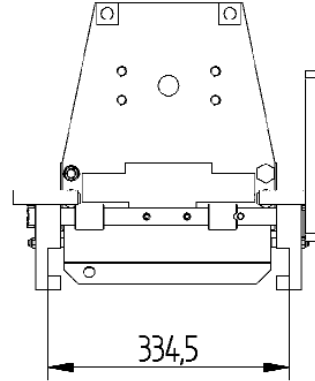
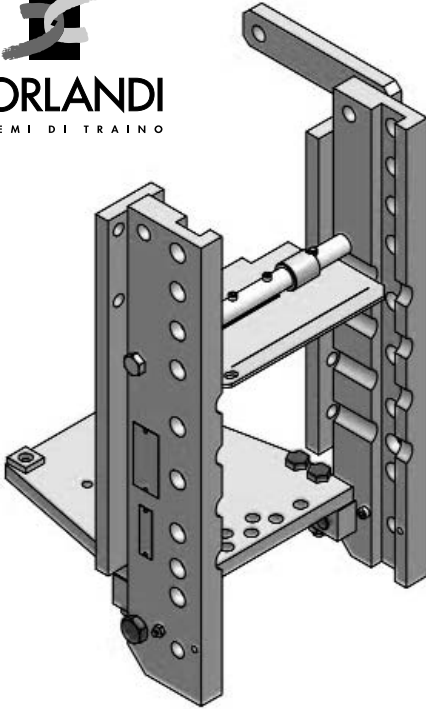
Dati tecnici - Technical data

Tipo Type	Codice Art. Number	Omologazione CUNA Homologation CUNA			Omologazione CEE Homologation CEE		
		carico statico (daN) static load (daN)	peso rimorchiabile (t) total trailer weight (t)	cat.	D (kn)	S (kg)	Nr.
MC C1	MC C1 000	2500	20	D3	68,9	2500	e11*1183



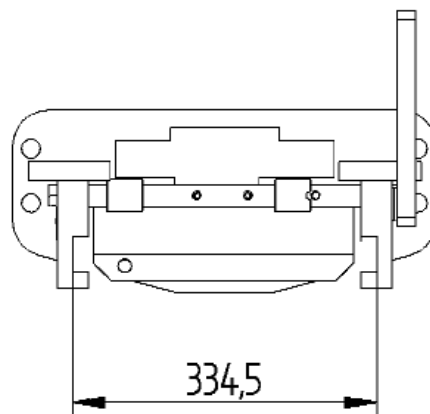
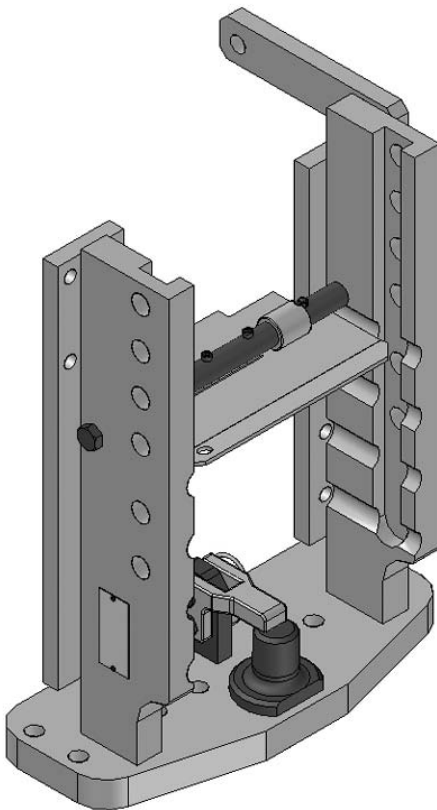
Dati tecnici - Technical data

Tipo Type	Codice Art. Number	Omologazione CEE Homologation CEE		
		D (kn)	S (kg)	Nr.
MC CF	MC CF 000	69,9	2500	-



Dati tecnici - Technical data

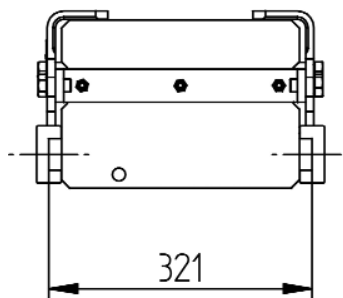
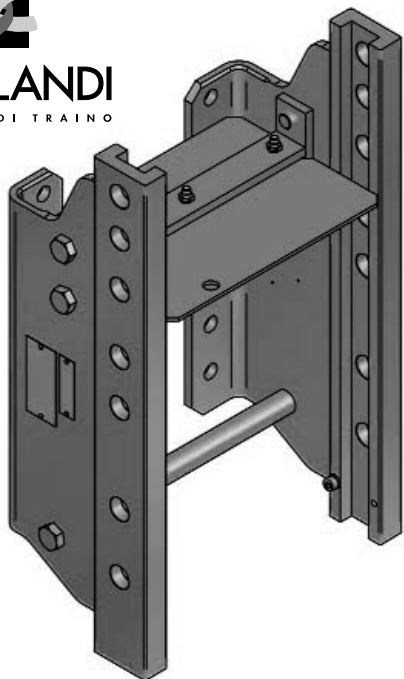
Tipo Type	Codice Art. Number	Omologazione CUNA Homologation CUNA			Omologazione CEE Homologation CEE		
		carico statico (daN) static load (daN)	peso rimorchiabile (t) total trailer weight (t)	cat.	D (kn)	S (kg)	Nr.
MC X1	MC X1 000	2500	20	D3	84,3	2500	e11*1181



Dati tecnici - Technical data

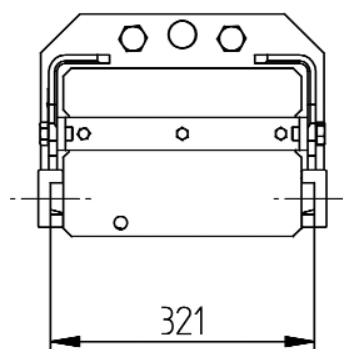
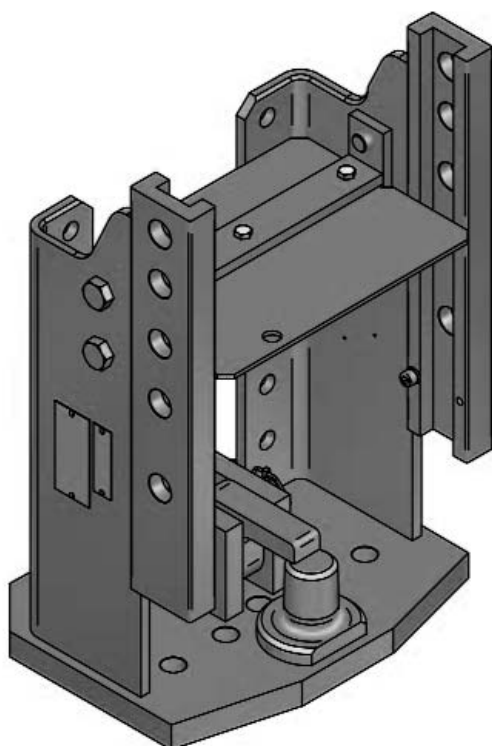
Tipo Type	Codice Art. Number	Omologazione CEE Homologation CEE		
		D (kn)	S (kg)	Nr.
MC 1F	MC 1F 000	84,3	2500	-

Serie Dorado / Agroplus 60-70
Agrolux 50-57-60-67-70-80-90
Argon 55-70



Dati tecnici - Technical data

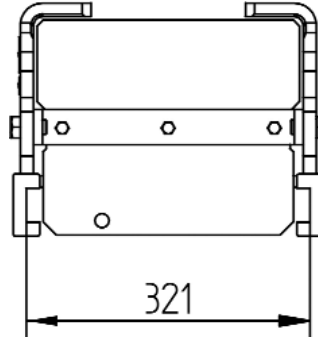
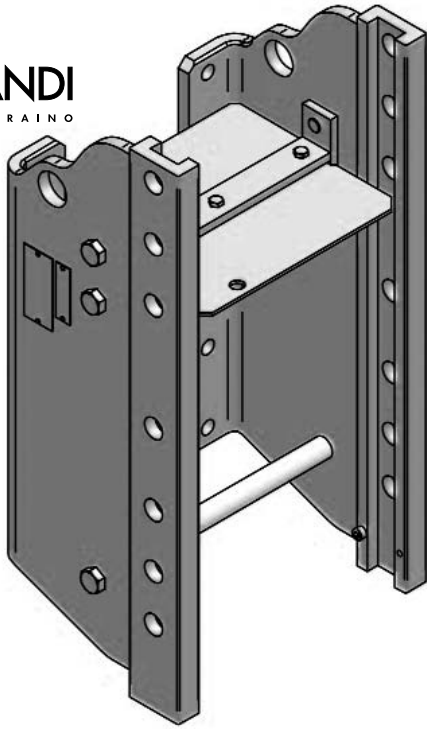
Tipo Type	Codice Art. Number	Omologazione CUNA Homologation CUNA			Omologazione CEE Homologation CEE		
		carico statico (daN) static load (daN)	peso rimorchiabile (t) total trailer weight (t)	cat.	D (kn)	S (kg)	Nr.
SL 1C	SL 1C 000	2000	14	D2	45	1500	e11*2120



Dati tecnici - Technical data

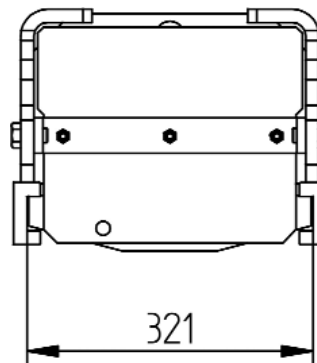
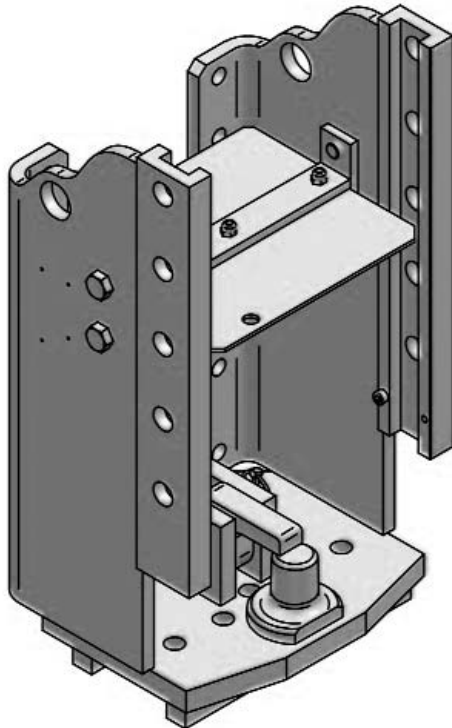
Tipo Type	Codice Art. Number	Omologazione CEE Homologation CEE		
		D (kn)	S (kg)	Nr.
SL 1F	SL 1F 000	45	1500	e11*2136

Serie Silver 85-135 Agropius 90-100
New Explorer - Explorer Classic 95
Explorer 95TB / 85-95T



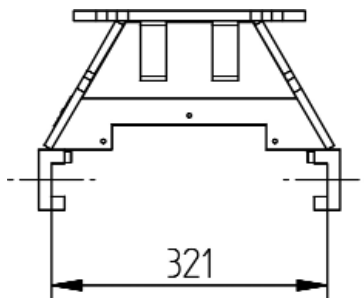
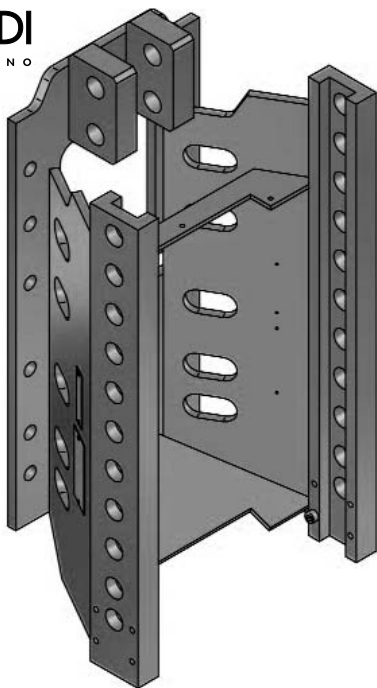
Dati tecnici - Technical data

Tipo Type	Codice Art. Number	Omologazione CUNA Homologation CUNA			Omologazione CEE Homologation CEE		
		carico statico (daN) static load (daN)	peso rimorchiabile (t) total trailer weight (t)	cat.	D (kn)	S (kg)	Nr.
SL 3C	SL 3C 000	2500	20	D3	66	2500	e11*2121



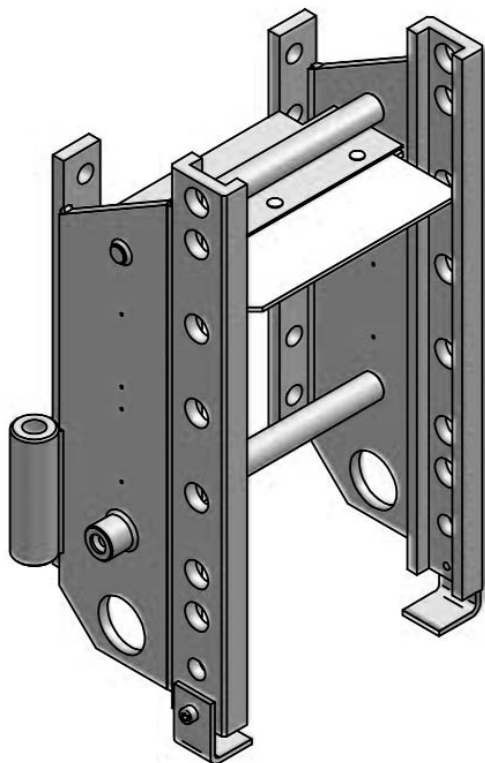
Dati tecnici - Technical data

Tipo Type	Codice Art. Number	Omologazione CEE Homologation CEE		
		D (kn)	S (kg)	Nr.
SL 3F	SL 3F 000	66	2500	-

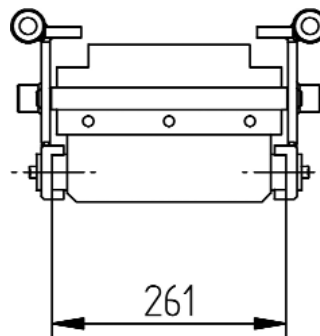


Dati tecnici - Technical data

Tipo Type	Codice Art. Number	Omologazione CUNA Homologation CUNA			Omologazione CEE Homologation CEE		
		carico statico (daN) static load (daN)	peso rimorchiabile (t) total trailer weight (t)	cat.	S (kg)	peso rimorchiabile (t) total trailer weight (t)	Nr.
SL EX	SL EX 000	2000	20	D2	2000	20	e11*2095

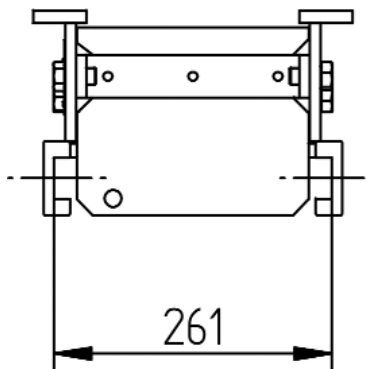
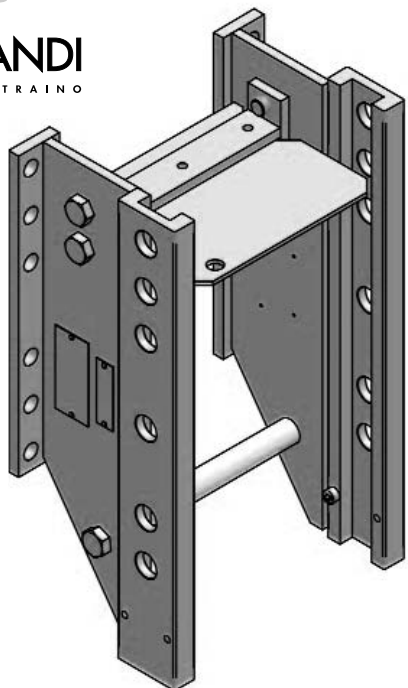


Serie Golden Frutteto Vigneto / Argon 55-70 F Agrolux 57-67F



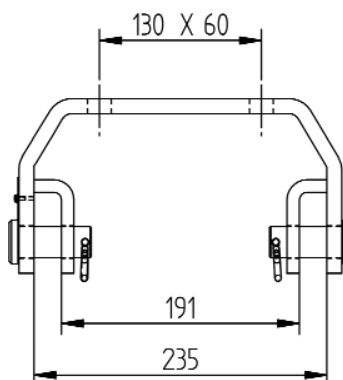
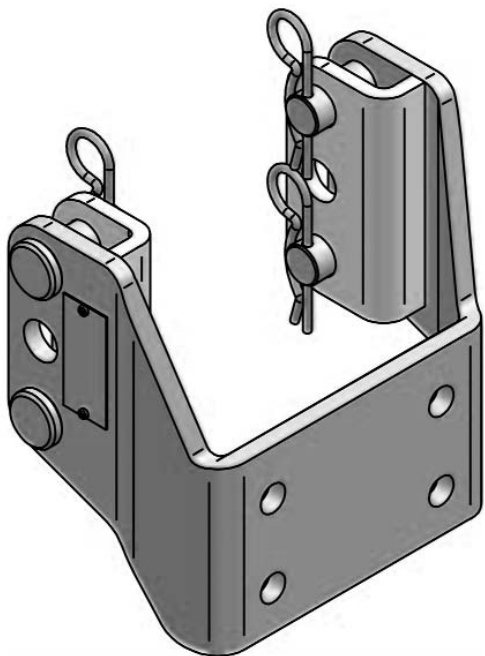
Dati tecnici - Technical data

Tipo Type	Codice Art. Number	Omologazione CUNA Homologation CUNA			Omologazione CEE Homologation CEE		
		carico statico (daN) static load (daN)	peso rimorchiabile (t) total trailer weight (t)	cat.	S (kg)	peso rimorchiabile (t) total trailer weight (t)	Nr.
SL 21C	SL 21C 000	2000	14	D2	2000	14	-



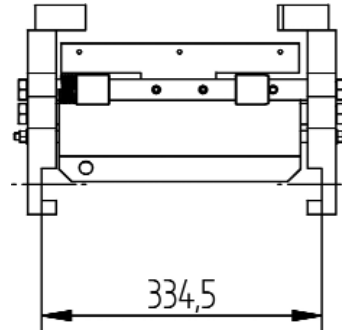
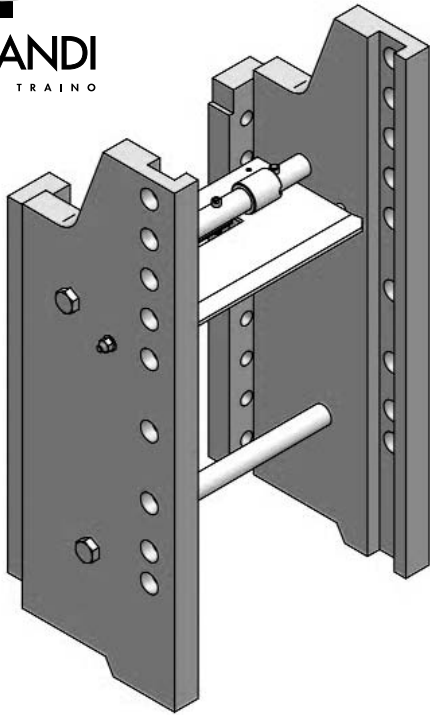
Dati tecnici - Technical data

Tipo Type	Codice Art. Number	Omologazione CEE Homologation CEE		
		D (daN)	S (Kg)	Nr.
SL FC	SL FC 000	40	1200	e11*2137



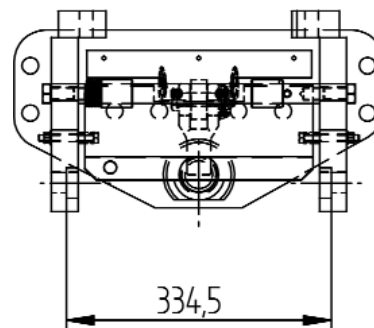
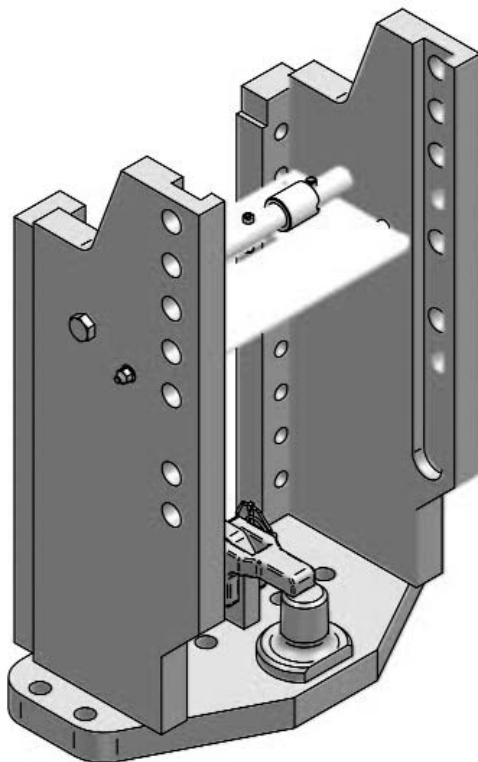
Dati tecnici - Technical data

Tipo Type	Codice Art. Number	Omologazione CEE Homologation CEE		
		peso rimorchiabile (t) total trailer weight (t)	S (Kg)	Nr.
SL F2 000	SL F2 000	12	1100	e11*2093



Dati tecnici - Technical data

Tipo Type	Codice Art. Number	Omologazione CUNA Homologation CUNA		cat.	Omologazione CEE Homologation CEE		
		carico statico (daN) static load (daN)	peso rimorchiabile (t) total trailer weight (t)		D (kn)	S (kg)	Nr.
SL 01	SL 01 000	2500	20	D3	84,3	2500	e11*1181



Dati tecnici - Technical data

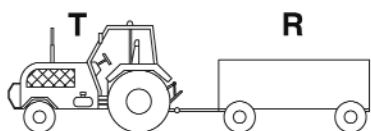
Tipo Type	Codice Art. Number	Omologazione CEE Homologation CEE		
		D (daN)	S (Kg)	Nr.
SL 0F	SL 0F 000	84,3	3000	e11*0178

Valore D: è definito come il carico teorico di riferimento per la determinazione della forza teorica orizzontale dinamica che il veicolo trainante ed il rimorchio si scambiano;

Valore Dc: è definito come il carico teorico di riferimento per la determinazione della forza teorica orizzontale dinamica che il veicolo trainante ed il rimorchio ad asse rigido centrale si scambiano;

Valore S: è il carico verticale statico che il rimorchio ad asse centrale trasmette al gancio in condizioni statiche;

1.1 - Rimorchi ad asse sterzante



In questo caso i parametri tecnici caratteristici sono i seguenti:

$$D = g \times \frac{T \times R}{T + R}$$

Dove:

g= Accelerazione di gravità che si assume pari a 9.81 m/s²

T= Rappresenta la massa massima tecnicamente ammissibile, espressa in ton del veicolo trainante comprendente il carico verticale statico che viene trasmesso al gancio dall'occhione;

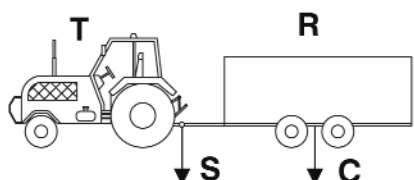
R= rappresenta la massa massima tecnicamente ammissibile del rimorchio espressa in ton.

Esempio di calcolo

a) T= 10 ton; R=30 ton $D = \frac{9.81 \times (10 \times 30)}{10 + 30} = 73,6 \text{ kN}$

1.2 - Rimorchi ad asse rigido centrale

Fig. 2



In questo caso i parametri tecnici caratteristici sono i seguenti:

$$Dc = g \times \frac{T \times C}{T + C}$$

dove:

T= rappresenta la massa massima tecnicamente ammissibile, espressa in ton del veicolo trainante comprendente il carico verticale statico che viene trasmesso al gancio dall'occhione;

C= rappresenta la somma, espressa in ton, dei carichi assiali massimi che il rimorchio trasmette al terreno.

$$S = R - C$$

R= rappresenta la massa massima tecnicamente ammissibile del rimorchio espressa in ton.

Esempio di calcolo

Veicolo trainante isolato con massa= 10 ton

Rimorchio ad asse rigido centrale con:

$$R = 20 \text{ ton} \quad C = 18 \text{ ton} \quad S = 2 \text{ ton}$$

Per il calcolo del valore Dc si dovrà considerare la massa della motrice pari a:

$$T = 10 + S = 10 + 2 = 12 \text{ ton}$$

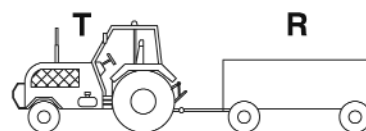
e quindi

$$Dc = \frac{9.81 \times (12 \times 18)}{12 + 18} = 70,7 \text{ kN}$$

D-value: Theoretical load for the determination of the theoretical horizontal dynamic force between towing vehicle and steering axle trailer;

Dc-value: Theoretical load for the determination of the theoretical horizontal dynamic force between towing vehicle and central axle trailer;

S-value: Static vertical load transmitted to the coupling by central axle trailer in static conditions;



In this case the technical parameter is following:

$$D = g \times \frac{T \times R}{T + R}$$

where:

g= Gravitational acceleration; 9.81 m/s²;

T= Technically admissible maximum load of the towing vehicle in tons, including the static vertical load transmitted to the coupling by the drawbar eye;

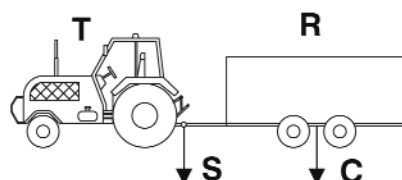
R= Technically admissible maximum weight of the trailer in tons.

Example of calculation

a) T= 10 ton; R=30 ton $D = \frac{9.81 \times (10 \times 30)}{10 + 30} = 73,6 \text{ kN}$

1.2 - Central axle trailers

Fig. 2



In this case the technical parameter is following:

$$Dc = g \times \frac{T \times C}{T + C}$$

where:

T= Technically admissible maximum load of the towing vehicle in tons, including the static vertical load transmitted to the coupling by the drawbar eye;

C= Sum of the maximum axle loads transmitted to the ground by the trailer in tons.

$$S = R - C$$

R= Technically admissible maximum weight of the trailer in tons.

Example of calculation

Towing vehicle with 10 tons weight

Central axle trailer with:

$$R = 20 \text{ ton} \quad C = 18 \text{ ton} \quad S = 2 \text{ ton}$$

For the determination of the Dc-value the weight of the towing vehicle is calculated as follows:

$$T = 10 + S = 10 + 2 = 12 \text{ ton}$$

and therefore

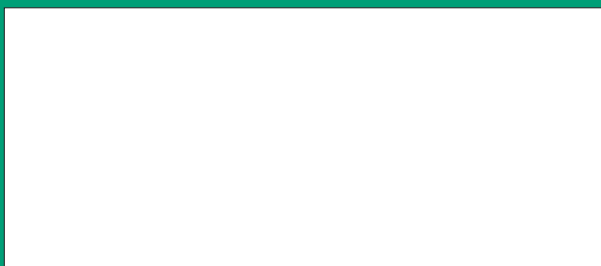
$$Dc = \frac{9.81 \times (12 \times 18)}{12 + 18} = 70,7 \text{ kN}$$

www.orlandi.it



V. ORLANDI
SISTEMI DI TRAINO

V. Orlandi S.p.A. - 25020 Flero (BS) Italy - Via Quinzano, 3
Tel. +39-030-358.27.22 - Fax +39-030-358.22.62 - E-mail: orlandi@orlandi.it - <http://www.orlandi.it>



Subject to technical changes without prior notice

1990 283